



The Right Move

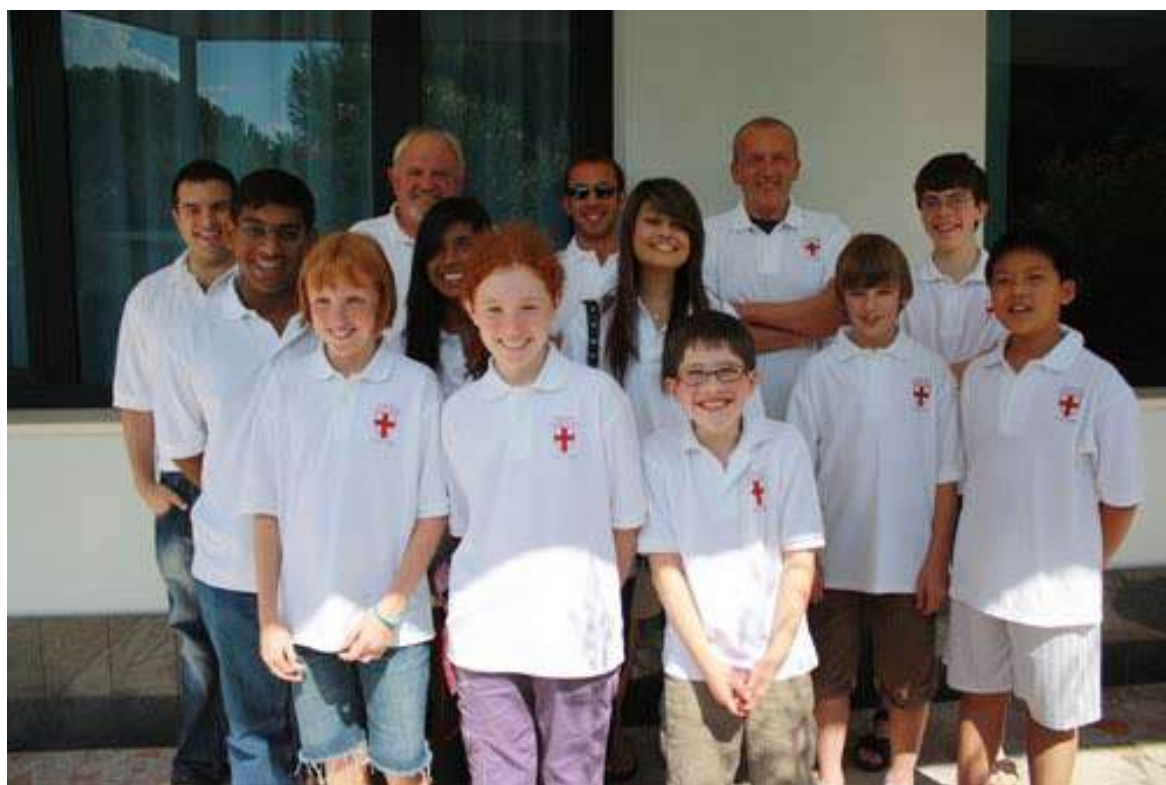
2009
NOV.



English Chess Federation—Junior Chess Magazine

director.juniorchess@englishchess.org.uk

EUROPEAN YOUTH CHAMPIONSHIP



The English Squad has returned from a successful trip to the 2009 European Youth Championship in Fermo, Italy, where standards were very high. We are proud of our players who gave 100% throughout. The atmosphere within the team was excellent.

I would like to thank Peter Purland, my fellow coaches Nick Pert and Lawrence Trent and all the parents for their support on this trip.

We present some photos from the trip now, a list of final results and a selection of games for your pleasure

U18 Boys Richard Lobo R1 vs Felix Graaf GER	Drew
R2 (B) v Lopez Ivan Salgado GM (Esp)	Lost
R3 (W) v Adrian Gonzalez Laso (Esp)	Won
R4 (B) v Felix Stips (Ita)	Lost
R5 (W) v Mikhail Biryukov FM (Rus)	Drew
67th R6 (B) v Maarten Larmuseau (Bel)	Lost
R7 (W) v Alessio Valsecchi FM (Ita)	Lost
R8 (B) v David Della Mora (Ita)	Won
2077 71st R9 (W) v Vincenzo Piccoli (Ita)	Won 4
U18 Girls Jessica Thilaganathan 42\58 R1 (B) v Eszter Dudas WFM (Hun)	Drew
R2 (W) v Svenja van Orsouw (Deu)	Drew
R3 (B) v Anna Tanacs (Hun)	Won
R4 (B) v Anna IngreSt (Swe)	Lost
R5 (W) v Hallgurdur Thorsteindottir (Isl)	Drew
28th R6 (W) v Maria Manelidu (Gre)	Drew
R7 (B) v Emma Richard (Fra)	Lost
R8 (B) v Angelica Babel (Mda)	Lost

1907 42nd R9 (W) v Bjorg Sigridur Helgadottir (Isl)	Drew 3½
U16 Boys James Foster 78\101 R1 (B) v Lazer Nestorovic (Srb)	Lost
R2 (W) v Benjamin Arvole (Nor)	Lost
R3 (B) v Nicolo Rossi (Ita)	Won
R4 (W) v Dimitris-Alkis Kaforos (Gre)	Won
R5 (B) v Hugo Ten Hertog (Nld)	Won
35th R6 (W) v Concha Diego Antolin (Esp)	Drew
R7 (B) v Nodar Lortkipanidze (Geo)	Lost
R8 (W) v Daniel Schnegg (Aut)	Lost
2071 61st R9 (B) v Sander Vandevenne (Bel)	Drew 4

U16 Girls Sheila Dines 29\73 R1 (B) v Paula Fuentes Martin (Esp)	Won
R2 (W) v Marina Brunello WFM (Ita)	Lost
R3 (B) v Zoya Arnatskaya (Rus)	Lost
R4 (W) v Rosa Maria Casolina (Ita)	Drew
R5 (B) v Astghik Meseljyan (Arm)	Lost
59th R6 (W) v Ester Venturelli (Ita)	Won
R7 (B) v Marianthi Tsarouha (Gre)	Won
R8 (W) v Cansa Soylemez (Tur)	Won
1790 41st R9 (B) v Mardan Qizi Abdulla Khayala (Aze)	Lost 4½

U14 Boys Brandon Clarke 43\122 R1 (W) v Marco Donati (Ita)	Won
R2 (B) v Simone de Filomeno (Ita)	Won
R3 (B) v Denis Kadric (BIH)	Won
R4 (W) v Alexandr Bortnik (Ukr)	Lost
R5 (B) v Karen H Grigoryan (Arm)	Won
7th R6 (W) v Gary Giroyan (Fra)	Lost
R7 (B) v Radumarian Doros (Rom)	Lost
R8 (W) v Benedict Hasenohr (Sui)	Lost
2055 50th R9 (W) v Mauro Tirelli (Ita)	Drew 4½

U14 Girls Amy Hoare 62\78 R1 (B) v Lika Kobeshavidze (Geo)	Lost
R2 (W) v Ali Roy (Sco)	Won
R3 (W) v Theresa Pohl (Deu)	Lost
R4 (B) v Kristina Bacic (Mne)	Lost
R5 (W) v Maria Larianova (Fin)	Won
59th R6 (B) v Susanna Gaboyan (Arm)	Won
R7 (W) v Polina Venkova (Bul)	Won
R8 (B) v Zsuzsanna Kabai (Hun)	Lost
1771 37th R9 (W) v Ksenija Tomin (Srb)	Drew 4½

U12 Boys Roy Zhang 106\106 R1 (W) v Yue Shen (Esp)	Lost
R2 (B) v Claudio de Filomeno (Ita)	Won
R3 (W) v Karel Ulanowski (Pol)	Won
R4 (B) v Batuhan Dastan (Tur)	Drew
R5 (W) v Boris Markoja (Slo)	Drew
38th R6 (B) v Lars Vereggen (Nld)	Lost
R7 (W) v Valeriy Shoshin (Rus)	Won
R8 (B) Dominik Marezuk (Pol)	Lost
1793 38th R9 (W) v Lennert Lenaerts (Bel)	Won 5

U12 Girls Katherine Shepherd 78\82 R1 (W) v Antonina Gora (Pol)	Won
R2 (B) v Melinda Varga (Hun)	Lost
R3 (W) v Vlada Boyarchenko (Lux)	Lost
R4 (B) v Eva Harazinka (Pol)	Lost
R5 (B) v Marija Golubeva (Lat)	Won
51st R6 (W) v Laura Gucci (Ita)	Lost
R7 (B) v Carlotta Galante (Ita)	Won
R8 (W) v Ada Kakutia (Geo)	Lost
1290 69th R9 (B) v Mirto-Iro Kaforou (Gre)	Lost 3

U10 Boys Matthew Wadsworth 81\81R1	BYE -- Won
R2 (W) v Zaur Abbasov (Aze)	Lost
R3 (B) v Nikolai Golikov (Rus)	Won
R4 (W) v Antonio Rodriguez Mellado (Esp)	Won
R5 (B) v Valerio Carnicelli (Ita)	Won
6th R6 (W) v Robin Lecomte (Nld)	Drew
R7 (B) v Igor Kudelya (Rus)	Drew
R8 (W) v Anton Sheremot (Blr)	Lost
1594 11th R9 (B) v Nikita Ayvazyan (Rus)	Won 6

Note: Most photos this issue are placed at random and may not involve the events they are placed in.

CONTENTS	
NOVEMBER 2009	
European Youth Championships.....	1
From Andrew Martin.....	4
Games of the Month	4
Games.....	6
from Peter Purland	13
London Chess Classic.....	15
Popular Chess Quizzes.....	22
The Junior 4NCL.....	23
Answer to October Quiz.....	27
Best Quiz Answers	27

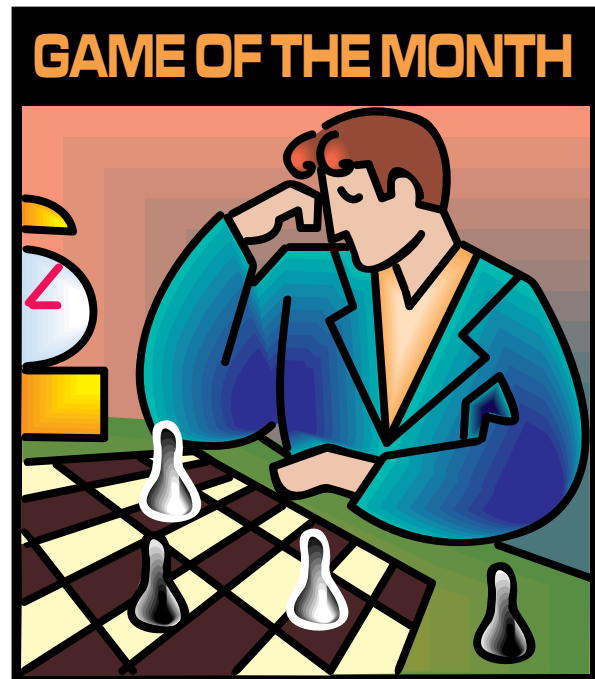


EDITOR'S FOREWORD AND BASIC ADVICE

by Andrew Martin
International Master

Welcome to the November 2009 *Right Move*. If you have any news, games or events you wish to highlight in these pages, then please send them to: a.martin2007@yahoo.co.uk. Have a great month!

Andrew



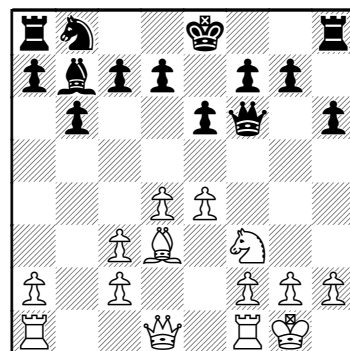
Fang, Joseph (2314) - Kraai, Jesse (2454)

[B00]

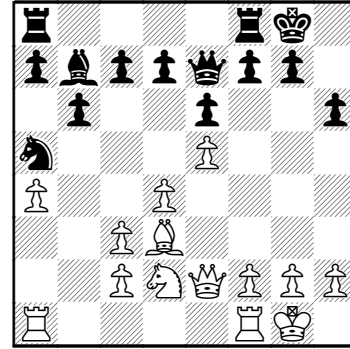
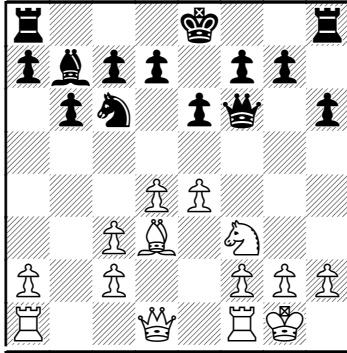
Budapest FS06 GM, 11.06.2003

The upcoming game is very interesting because it features an improvement for Black in one of the main lines of Owen's Defence.

1. Nf3 b6 2. e4 Bb7 3. Nc3 e6 4. d4 Bb4 5. Bd3 Nf6 6. Bg5 h6 7. Bxf6 Bxc3+ 8. bxc3 Qxf6 9. 0-0

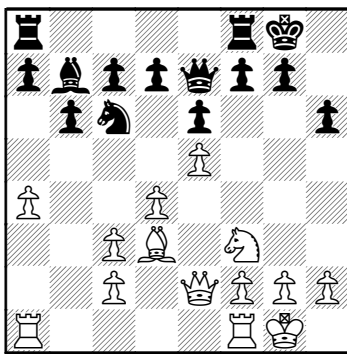
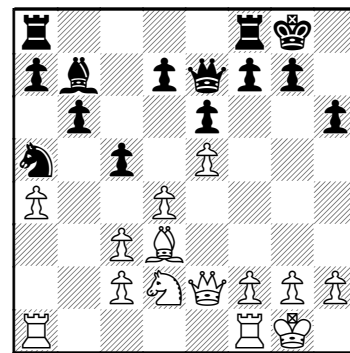


Black usually plays 9...d6 here, hoping to close the game down. White replies with Nd2 and f2-f4, creating an attack. Now Kraai produces an improvement. 9... Nc6!?



9...0-0!? might also be possible. Let's analyse: [9...0-0 10.a4 (10.e5 ♗xf3! 11.exf6 ♗xd1 12.fxg7 ♔xg7 13.♖fxd1 f5 14.a4 ♕f6=) 10...♘c6 11.e5 ♕f4 12.g3 ♕g4∞ All of 9...Nc6, 9...0-0 and 9...d6 are worth investigation and lead to an interesting middlegame.] **10.e5** White is provoked. [Attempts to go back into the recommended attacking line with 10.♘d2 e5 11.f4?! are rebuffed by 11...exd4 12.e5 ♕h4 when it's very important that Black has an extra piece in play.] **10...♕e7 11.a4 0-0 12.♕e2**

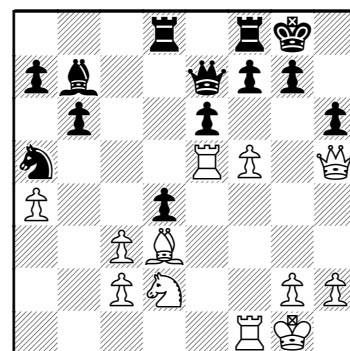
White switches tack, planning f2-f4-f5. **13...c5!**



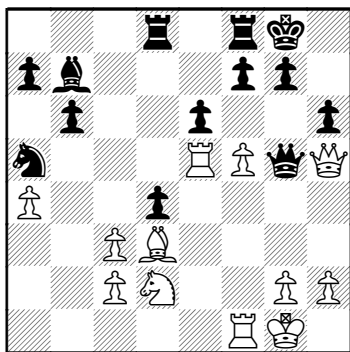
COUNTERPLAY is the essence of defence. Don't just sit there worrying. DO SOMETHING!

14.f4 d6 15.♖ae1 ♖ad8 16.♕h5
 16.f5 exf5 17.♖xf5 cxd4 18.cxd4 dxe5
 19.♖xe5 ♕b4.
16...dxe5 17.♖xe5 cxd4 18.f5

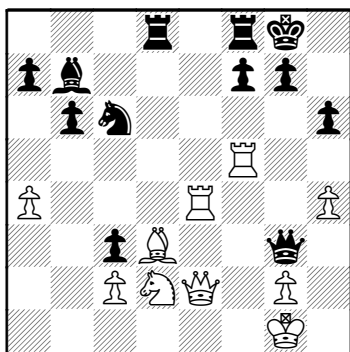
Which is best? a) 12...f5; b) 12...Na5; c) 12...d6. It might be worth contemplating this question before proceeding. What would you do as Black? **12...♘a5** ANSWER 12...Na5 ! deals with the threat of Qe4 12...f5 weakens the kingside after 13 exf6 Qxf6 14 Qe4! 12...d6 allows 13 Qe4, which it's wisest not to do. **13.♘d2**



White seems to be putting on the pressure, but Kraai has prepared his counterplay carefully. **18...♕g5!**



A cool defensive move, evading f5–f6 and threatening to exchange off the dangerous enemy Queen. 19. ♖e2 ♜c6 20. h4 ♚g3 21. ♞e4 exf5 22. ♞xf5 dxc3 White has no real compensation for his missing pawns.



23. ♞f3 ♞d6 24. ♞e3 ♞c8 25. ♞ff4 f5 26. ♞c4 ♞fe8 27. ♞c1 ♞e5 28. ♞xe5 ♞xe5 29. ♞a3 ♞e6 30. ♞xc3 ♞xc4 31. ♞xc4+ ♜h8 32. ♞xf5 ♞e3+ A nice game by Kraai, where he took every opportunity available to him. 0-1

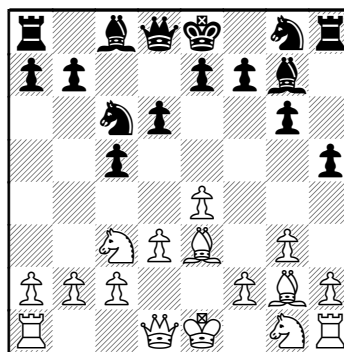
GAMES

De Filomento, Claudio – Zhang, Roy [B26]

Euro Youth, 02.09.2009

[Zhang, Roy]

1. e4 c5 2. ♞c3 ♜c6 3. g3 g6 4. ♞g2 ♞g7 5. d3 d6 6. ♞e3 h5



This is an idea of John Emms. It can be dangerous to those who ignore it and carry on with development 7. h4 [7. ♞ge2 h4 8. ♞d2 h3! 9. ♞f1 (9. ♞f3 ♞e5 10. ♞g1 ♞f6) 9... ♞d4 10. ♞xd4 cxd4 11. ♞d1] 7... ♞f6 8. ♞d2 e5? Ng4 straight away was even better 9. f4 ♞g4 10. ♞ge2 ♞d4 11. ♞xd4 cxd4 12. ♞d5 ♞e6 13. ♞b4? ♞xd5! 14. exd5 ♞e3 15. ♜f2 0-0 16. ♞ac1 ♞e7 White has a horrible position 17. fxe5 ♞xe5 18. ♞f4 ♞h6! 19. ♞ce1? ♞xf4 20. gxf4 ♞xf4+ 21. ♞f3 ♞xc2 22. ♞e4 ♞xe4 23. dxe4 ♞xb4 24. ♞g1 ♞d3+ 25. ♜e2 ♞f4+ 26. ♜d2 ♞ac8 27. ♞f1 f6 28. ♞g4 hxg4 29. ♞xf4 f5 30. exf5 gxf5 31. ♞xd4 ♞ce8 Cutting White's king away. 32. ♞b4 ♞e7 33. a4 g3 34. ♞b3 g2! 35. ♞g3+ ♞g7 0-1



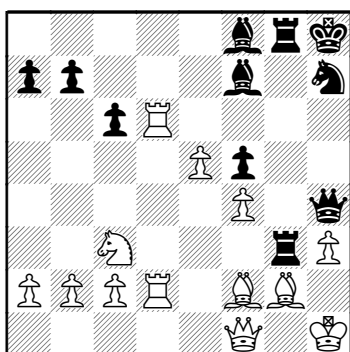
Zhang,Roy – Ulanowski,Karol [A48]

Euro Youth, 04.09.2009

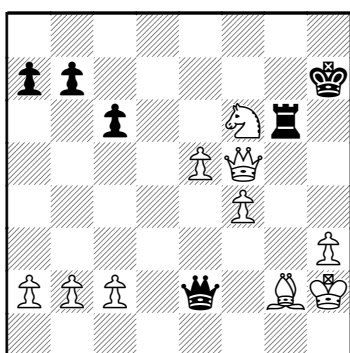
[Zhang,Roy]

1.d4 ♘f6 2.♗f3 g6 3.♙f4 ♙g7 4.e3 d6 5.h3 0-0 6.♙e2 ♗bd7 7.0-0 ♗h5 8.♙h2 e5 9.dxe5 dxe5 10.♗c3 ♞e8 11.g4!?

Wins a pawn but leaves White's King exposed. 11...♗hf6 12.♗xe5 ♞e7 [12...♗xe5 13.♞xd8 ♞xd8 14.♙xe5] 13.♗xd7 ♙xd7 14.♙f3 ♞ad8 15.♞e2 Bxc7 was even better 15...c6 16.♞fd1 h5 17.gxh5 gxh5 18.♙g2 ♗h8 19.e4 ♞g8 20.e5 ♗h7 21.♞xh5 f5 22.f4 ♞df8 23.♞d6 ♙e6 24.♞ad1 ♞f7 25.♗h1 ♙f8 26.♙g1 ♞fg7 27.♞1d2 ♙f7 28.♞f3 ♞g3 29.♞f1 ♞h4 30.♙f2!



The only decent move 30...♙xd6 31.♙xg3 ♞xg3 32.♞xd6 ♙c4 33.♞f3 ♞e1+ 34.♗h2 ♙f7 35.♞d7 ♙h5?? The decisive blunder. Without this blunder, he could have struggled on 36.♞xh7+ ♗xh7 37.♞xh5+ ♗g7 38.♞g5+ ♗h7 39.♞xf5+ ♞g6 40.♗e4! ♞e2 41.♗f6+



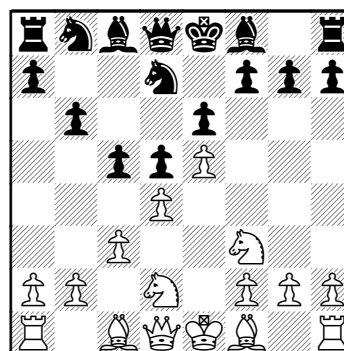
41...♗g7 [41...♗h6 42.♗g4+ ♗g7 43.♞d7+ ♗f8 44.♞d8+ ♗f7 45.f5 ♞xg4 46.e6+ ♗g7 47.hxg4 ♞e5+ 48.♗h3 ♞e3+ 49.♗h4 ♞h6+ 50.♗g3 ♞e3+ 51.♙f3 ♞g1+ 52.♗h3 ♞f1+ 53.♙g2+-] 42.♞d7+ ♗f8 43.♞e8+ ♗g7 44.♞g8+ ♗h6 45.♞h7# 1-0

Lobo,Richard A – Graf,Felix [C05]

European Youth Championships (1), 31.08.2009

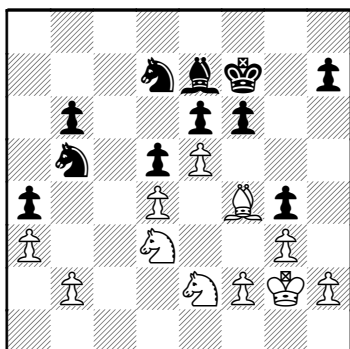
[Richard A Lobo]

1.e4 e6 2.d4 d5 3.♗d2 ♗f6 4.e5 ♗fd7 5.♗gf3 c5 6.c3 b6



7.♞a4 [7.♙b5 is the correct move. Pawn on b5 is painful for Black.] 7...♙e7 8.♙d3 0-0 [8...a5 avoiding Re1.] 9.0-0 a5 10.♞e1 ♞c7?! 11.♗f1 cxd4 12.cxd4 ♙a6 13.♙xa6 [13.♙b1!? perhaps with an attack. However, the game continuation was safer.] 13...♗xa6 14.♙d2 ♞fc8 15.♞ac1 ♞b7 16.♞b5! ♗b4 17.a3 ♗c6 18.♗e3 ♗a7 19.♞d3 ♞xc1 20.♞xc1? [20.♙xc1 would have just saved tempo compared to the game, if that's what I wanted to do all along.] 20...♞c8 21.♞e1 ♗f8? passive. 22.g3?! not the most useful. [22.♗d1; 22.a4 ideas that could have helped in the game. Nc3 would be very useful and don't want a Black bind with ... a4.] 22...♞c7 23.♗g2? worse here than on e3. Not contributing – much

better on e3 or g4 for an attack. [23. h4 ♖c6 24.h5 f6] 23...♖c6 24.♖c1 ♗b5 25.♗xb5 ♖xc1+ 26.♙xc1 [26.♗f1 saves tempo. 26...♖xf1+ 27.♙xf1 ♖b5] 26...♗xb5 27.♗f4 [27.a4 ♖c7 28.♗f4] 27...a4 not as painful here as earlier, but still should be prevented. 28.♙f1 g5 29.♗e2 g4 30.♗e1 f6 31.♗d3 ♗d7?! [31...♗g6] 32.♙f4 ♙f7 33.♙g2



33...f5? removing tension. [33...♙g6 34.h3 h5 35.hxg4 hxg4 36.f3 ♙f5] 34.♙d2 ♗b8 35.♙f1 ♗c6 36.♙e3 h6 37.h4 gxh3 38.♙g1 ♙g5 39.♙h2 [39. f4 so that pawn structure isn't made vulnerable.] 39...♙xe3 40.fxe3 ♗a5 41.♗f2 ♗c4 42.♗d1 ♗c7 43.♙xh3 b5 44.♗ec3 ♙g6 45.♙h4 ♗d2 draw agreed. 1/2-1/2

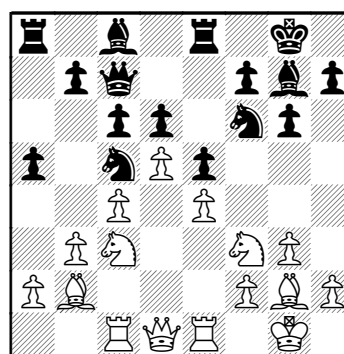


Salgado Lopez,Ivan (2556) – Lobo,Richard A (1920) [E60]

European Youth Championships (2), 01.09.2009

[Richard A Lobo]

1.d4 ♗f6 2.♗f3 g6 3.c4 ♙g7 4.g3 0-0 5.♙g2 d6 6.0-0 c6 [6...♗bd7 7.♗c3 e5 8.e4 exd4 9.♗xd4 ♗c5 with activity.] 7.♗c3 ♗bd7 8.b3 ♖c7?! passive, and makes taking on d5 later weaker. 9.♙b2 ♖e8?! 10.e4 e5 11.d5 ♗c5 12.♖e1 the pawn is weak. 12...a5 13.♖c1

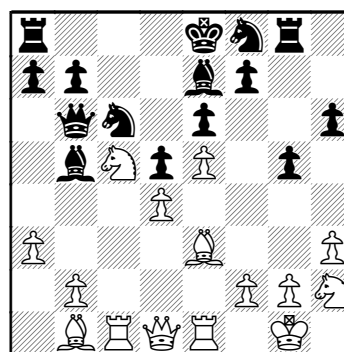


13...♖e7?! 14.♙a3! ♗fd7 Black can't take on d5, or move the knights. This ties up his entire queenside. 15.♖d2

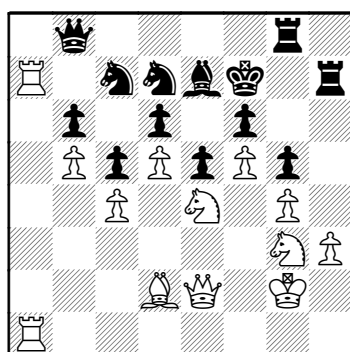


♕f8 16.h3 f6 17.♗h2 h5 18.♖f1 ♖g7
 19.♞cd1 g5 20.♞e2 ♞h7 21.♞fe1 ♕e7
 22.♕f3 h4 23.♕g4 ♗f8 24.♔g2 ♗a6
 25.♕f5 ♕xf5 26.exf5 c5 27.♗g4 hxg3
 28.fxg3 Black has no pawn breaks
 and is very passive, as he has been
 the entire game, starting with Qc7.
 White can do what he wants without
 any pressure. 28...♗d7 29.♕b2 ♔f7
 30.♞h1 ♞ah8 31.♞b1 ♞d8 32.♕c1
 ♞h5 33.♕d2 b6 34.♗f2 ♞8h7 35.g4
 ♞5h6 36.♗fe4 ♞h8 37.♗b5 ♗db8
 38.a3 ♗c7 39.♗bc3 ♞d7 40.b4 axb4
 41.axb4 ♗ba6 42.b5 ♗b8 43.♞a1 ♞c8
 44.♞a7 ♗d7 45.♗f2 ♞b8 46.♞ha1
 ♞6h7 47.♗ce4 ♞g8 48.♗g3 ♞hh8
 49.♗fe4 ♞h7

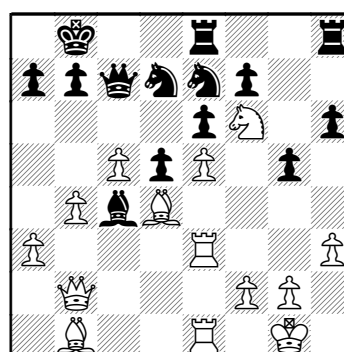
11.h3 h6? 12.♗b3 ♗f8 13.♕e3 ♕d7
 14.♞c1 ♗b4 15.♕b1 ♕b5 16.a3 ♗c6
 17.♗c5 ♞g8 18.♗h2



18...♕xc5 19.dxc5 ♞c7 20.♗g4 0-0-0
 21.♕d4 ♞h8 22.♞e3 ♔b8 23.b4 ♕c4
 24.♞d2 ♗d7 25.♞ce1 ♞de8 26.♞b2
 ♗e7 27.♗f6



50.♞f3 in hindsight, should have
 moved king over to queenside to
 avoid this sacrificial opportunity.
 50...♞hh8 51.♗h5 ♞c8 52.♔h2 ♗e8
 53.♕xg5 fxg5 54.f6 ♕d8 55.♞f5
 ♕c7 56.♞a8 ♗dxf6 57.♞xc8 ♞xh5
 58.gxh5 1-0



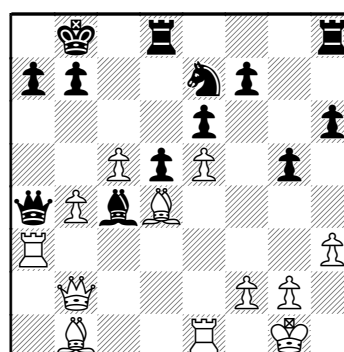
27...♞d8 [27...♗xf6 28.exf6 ♗c6
 29.♕e5 ♗xe5 30.♞xe5 ♞d8 31.♞d4]
 28.♗xd7+ ♞xd7 29.a4 ♞xa4 30.♞a3

**Lobo, Richard A (1920) –
 Gonzalez Laso, Adrian (2050)
 [C06]**

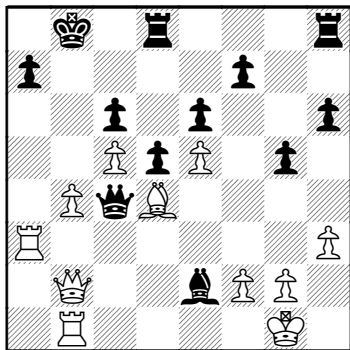
European Youth Championships (3),
 02.09.2009

[Richard A Lobo]

1.e4 e6 2.d4 d5 3.♗d2 ♗f6 4.e5 ♗fd7
 5.♗gf3 c5 6.c3 ♗c6 7.♕d3 cxd4
 8.cxd4 ♕e7 9.0-0 ♞b6 10.♞e1 g5



30...♞b5 [30...♞d7 31.♕c2 ♗c6 32.♕a4
 ♞c7 33.♞b1 h5 34.♞a1 g4 35.h4]
 31.♕c2 ♗c6 32.♞b1 ♕e2 33.♕a4 ♞c4
 34.♕xc6 bxc6



35.b5!! cxb5 36.Rc1 Qxc1+ 37.Qxc1 Qc4 38.Qa1 Rd7 39.c6 Rc7 40.Rxa7 1-0

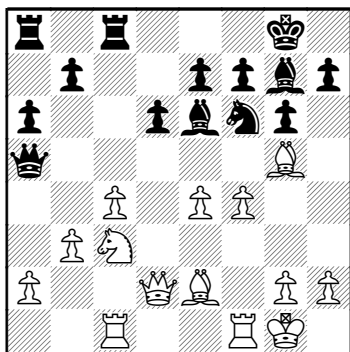
Stips,Felix (2240) –

Lobo,Richard A (1920) [B36]

European Youth Championships (4), 03.09.2009

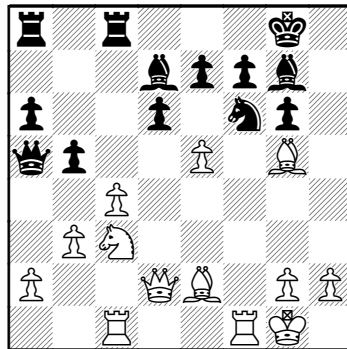
[Richard A Lobo]

1.e4 c5 2.Nf3 g6 3.d4 cxd4 4.Nxd4 Nc6 5.c4 Nf6 6.Nc3 d6 7.Qe2 Nxd4 8.Qxd4 Qg7 9.Qg5 0-0 10.Qd2 Qe6 11.0-0 Qa5 12.Rac1 Rfc8 13.b3 a6 14.f4

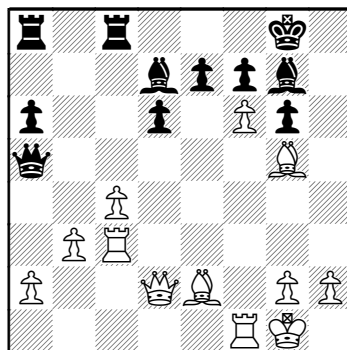


14...b5?? [14...Rc5! 15.Qe3 Re8 16.Qf3 Nd7 17.Nd5 Qxd5 18.exd5 Qxa2] 15.f5 Qd7 [15...gxf5 16.exf5 Qd7 17.Qf4 Qc6 18.cxb5 axb5 19.b4 Qa7+ 20.Rf2 Qb7; 15...b4?! 16.fxe6 bxc3 17.exf7+ Qxf7 18.Rxc3 Qe8 19.Qxf6 Qxf6 20.Rd3 Qxd2 21.Rxd2 Rc5 22.g3 Rb8 23.Qg2+] 16.fxg6 [16.e5 b4 17.exf6 bxc3 18.Rxc3 exf6 19.Rg3 Qxd2 20.Qxd2 Re8 21.Qg4 h5

22.Qxh5 gxh5 23.Qh6 Qh7 24.Rxg7+ Qxh6 25.Rxf7 Qc6 26.Rxf6+ Qg7 27.Rxd6 Rac8± analysed by Fritz 6. White is slightly better.] 16...hxg6 17.e5



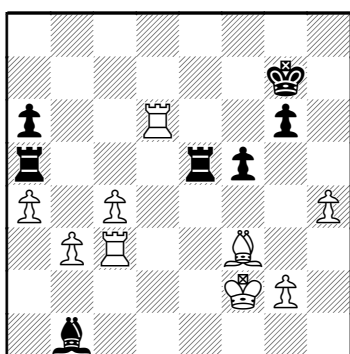
17...b4? [17...Ng4 18.Qxg4 Qxg4 19.Qf4 Qe6 20.Nd5 Qxd5 21.cxd5 Qb6+ 22.Qh1 f6 23.exf6 exf6 24.Rxc8+ Rxc8 25.Qe4 Qc5 26.Qe6+ Qh7 27.Qf4] 18.exf6 bxc3 19.Rxc3



White has a far superior



position. 19...♔h8 [19...exf6 20.♙xf6
 ♙xf6 21.♞xf6 ♙e6 22.♞f4 ♞ab8 23.♞d3
 ♞c5+ 24.♔h1 ♞b6 25.♙f3 ♞e8+-
] 20.♞d3 ♞xd2 21.♞xd2 ♞c5 22.h4
 ♙f5 23.fxe7 ♙e5 24.♙f4 ♞e8 25.♙xe5
 ♞xe5 26.♙f3 ♞8xe7 27.♞xd6 ♞a5
 28.♞d2 ♞e3 29.♞c1 ♞ee5 30.♔f2 ♔f8
 31.♞c3 ♙b1 32.a4 f5 33.♞d6 ♔g7



34.c5 ♞exc5 35.♞xc5 ♞xc5 36.♞xa6
 ♞c2+ 37.♔g3 ♞b2 38.♞b6 ♙c2
 39.♙d5 ♙e4 40.♙xe4 fxe4 41.a5 e3
 42.b4 e2 43.♔f2 1-0

**Wadsworth, Matthew –
 Rodrigues, Antonio [A20]**

EYCC U10 2009, 03.09.2009
 1.g3 e5 2.c4 ♘f6 3.♙g2 d5 4.cxd5
 ♘xd5 5.♘f3 e4 6.♞a4+ ♘c6 7.♞xe4+
 ♙e7 8.0-0 0-0 9.♘c3 ♘f6 10.♞c2 ♘b4
 11.♞d1 ♙f5 12.d3 h6 13.a3 ♘c6 14.e4
 ♙g4 15.h3 ♙h5 16.♙e3 ♙xf3 17.♙xf3

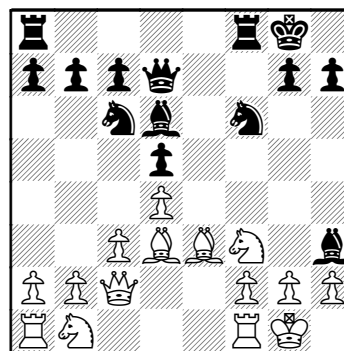


♘e5 18.d4 ♘xf3+ 19.♞xf3 ♞c8
 20.♞g2 c6 21.e5 ♘d5 22.♘xd5 cxd5
 23.♞ac1 ♞d7 24.f4 ♔h8 25.f5 ♞d8
 26.♞f2 ♙g5 27.♙xg5 ♞xg5 28.♞e1
 ♞ac8 29.h4 ♞d8 30.f6 g6 31.♞f3 ♔h7
 32.e6 ♞b6 33.e7 ♞fe8 34.♞f4 ♞c4
 35.♞d1 ♞c6 36.♔g2 ♞b3 37.♞dd2
 ♞e6 38.♞de2 ♞c6 39.♞e5 ♞b5 40.♞c2
 ♞e6 41.♞xe6 fxe6 42.f7 ♞d3 43.f8♞
 ♞xf8 44.exf8♞ ♞e4+ 45.♔h2 1-0.

**Foster, James (1867) –
 Kaforos, Dimitrious-Alkis
 (2209)
 [B00]**

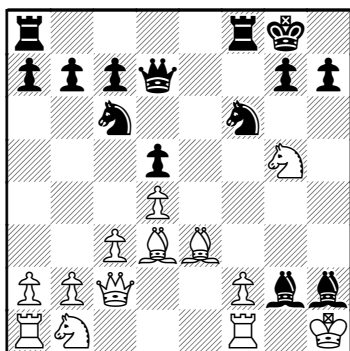
European U16 Boys Championship
 Fermo (4), 03.09.2009
 [James Foster]

1.e4 f5!? The Fred – An unusual,
 yet controversial answer to the very
 popular 1.e4. Black tries to weaken the
 white centre by removing the e–pawn,
 and using his open f–file he tries to
 generate counterplay. Black also gains
 a tempo as white has to waste moves
 with his e–pawn. 2.exf5 ♘f6 3.d4 d5
 4.♙d3 e6 5.fxe6 ♙d6 6.♘f3 0-0 7.0-0
 ♙xe6 8.♙e3 ♘c6 9.c3 ♞d7 10.♞c2
 ♙h3!?

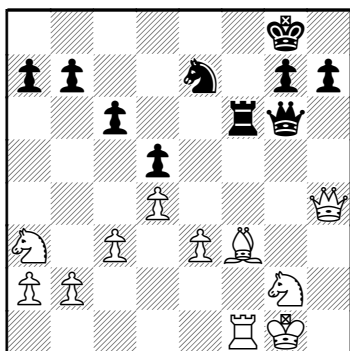


11.♘g5!! [11.gxh3?? ♞xh3 12.♘bd2
 ♘g4 13.♞fe1 ♙xh2+ 14.♔h1 ♙f4+
 15.♔g1 ♙xe3 16.♞xe3 ♘xe3 17.fxe3
 ♞g3+ 18.♔f1 ♞xf3+ 19.♘xf3 ♞xf3+]
 11...♙xh2+!? 12.♔h1!! [12.♔xh2??

♖g4+ 13.♔h1 (13.♔g3 ♔d6+ 14.♔h4 ♔h6+ 15.♔g3 ♔d6+ 16.♔h4 ♔h6+ 17.♔g3 ♔d6+; 13.♔g1 ♔d6 14.f4 ♖xe3 15.♙xh7+ ♔h8 16.♔d3 ♙xg2 17.♔xe3 ♙xf1 18.♔xf1 ♔xf4+ 19.♔xf4 ♔xf4+ 20.♔e2 ♔e8+ 21.♔d3 ♔e1 22.♔d2 ♔g1 23.♔e3 ♔f8 24.♖f3 ♔f1 25.♖g5 ♔e1+ 26.♔d2 ♔g1 27.♙d3 ♔xg5) 13...♔d6 14.g3 ♙xf1 15.♙xh7+ ♔h8 16.♔g6 ♖xf2+ 17.♙xf2 ♔xg6 18.♙xg6 ♔xf2] 12...♙xg2+! ?



Forcing white to win a bishop 13.♔xg2!! ♔g4+! ? Forcing white to win the other Bishop. 14.♔xh2!! ♔h5+ 15.♖h3 ♖g4+ 16.♔g2 ♔f3! ? 17.♖f4!! [17.♔xf3?? ♖ge5+ 18.♔g2 ♔g4+ 19.♔h1 ♔xh3+ 20.♔g1 ♖f3#] 17...♖xe3+ 18.fxe3 ♔g4+ 19.♔h1 ♔xf1+ 20.♙xf1 ♔e8 21.♔g2 ♔h4+ 22.♔h2 ♔e1 23.♔e2 ♔h4+ 24.♔g1 ♔g3+ 25.♖g2 ♔e6 26.♔f2 ♔g4 27.♙e2 ♔g6 28.♖a3 ♖e7 29.♔f1 ♔f6 30.♔e1 ♔e6 31.♙f3 c6 32.♔h4 ♔f6



33.♔h5!! ♖f5 [33...♔g3 34.♔e8+ ♔f8

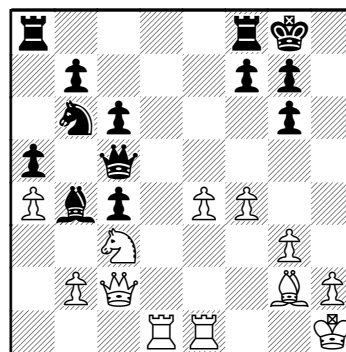


35.♙xd5+ ♖xd5 36.♔xf8#] 34.♔xg6 ♔xg6 35.♙xd5+!! 1-0

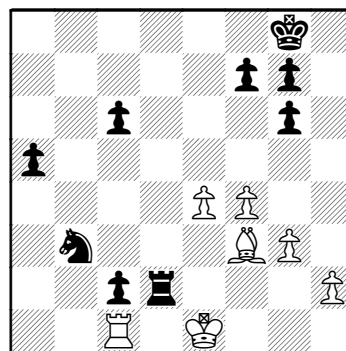
Tanacs,Anna (2071) – Thilaganathan,Jessica (1899) [D11]

U18G EYYC (3.9)

1.d4 d5 2.♖f3 ♖f6 3.g3 c6 4.♙g2 ♙f5 5.0-0 e6 6.c4 ♖bd7 7.♖c3 dxc4 8.♖h4 ♙g6 9.♖xg6 hxg6 10.e4 ♙e7 11.a4 a5 12.♔e2 ♖b6 13.♙e3 0-0 14.♔ad1 ♙b4 15.♔c2 ♖g4 16.♙f4 ♔e7 17.♔fe1 e5 18.dxe5 ♖xe5 19.♙xe5 ♔xe5 20.f4 ♔c5+ 21.♔h1



21...♔ad8 22.♔f1 ♙xc3 23.bxc3 ♔xd1 24.♔xd1 ♔a3 25.♔b1 ♖xa4 26.♔xb7 ♔xc3 27.♔f2 ♔d8 28.♙f3 ♔c1+ 29.♔g1 ♔xg1+ 30.♔xg1 c3 31.♔b1 c2 32.♔c1 ♔d2 33.♔f1 ♖c5 34.♔e1 ♖b3 0-1.



from

PETER PURLAND

England U12s v Flanders

The annual Flanders fixture in September was hosted by Kent and took place at Eltham College. The Flemish side contained some older and younger children than ours but was also not quite at full strength. As they select from a smaller base they were harder hit by the Euro Youth event than we were. (In fact we only lost one player). The top 8 boards were 8.5-7.5 in Flanders favour - these being their older players - but boards 9-12 were 8-0 for England and on 13-20 no player scored less than 1 out of two. We won the first round 12.5-7.5, a score very similar to last year, but followed it up with 14.5-5.5 in round two to record a convincing victory. For the rapidplay on Sunday we were joined by the children of the host families and again recorded team and individual victories over the Flemish. The event was won jointly by Isaac Sanders and Raphael Kalid with 6.5 points. We are grateful to James Clanchy and Tony Rao for everything they did to make the weekend such a success.



NYCA U18 and U14

These team events were held at a new venue this year. This was the Abraham Derby College at Madeley, Telford and proved a very suitable venue. 9 teams contested the U14s and 8 the u18s. The older event (which was over 8 boards) was a very close run thing with Yorkshire (returning to the competition after a few years' absence) making the early running and entering the last round with a 3½ point lead over Kent going in to the last round with Cheshire and North Wales a further point behind. The last round was to see a complete change of fortune with Staffordshire scoring a magnificent 7½ whilst Kent scored 6½. This left Yorkshire hanging on grimly and in the end they just made it with 21 points to Kent's 20½ with Staffordshire a point behind. The board prizes were shared between 6 of the 8 counties with James Adair of Berkshire winning the top board prize.

The younger event was far more clear cut. With Sussex taking the lead in the first round from Kent and Berkshire and this pattern continued throughout the tournament with Sussex ending up on 42½, Kent second on 35 with Berkshire third on 32. Jude Lenier of Sussex scored maximum points on board one although, despite Sussex's dominance, four other counties shared in the board prizes.

The second of the NYCA events will be held in Madeley on November 7th and is for U16 and U12 teams. Any new county wishing to enter should contact Kevin Staveley on 01443 772750.



The strongest event in England in 25 years!

Make sure you go along.



Entry for children under 16 is free!

- Everything is free for children under 16.
- There is free entry to the auditorium and commentary room,
- free entry to the Open 9 Day FIDE Rated event,
- Weekender,
- 1 day Rapid and nightly Blitz.

Every day we will be offering free lessons to schools from 10.30-12.30



GM Vladimir
Kramnik

GM Magnus
Carlsen

GM Hikaru
Nakamura

GM
Ni Hua

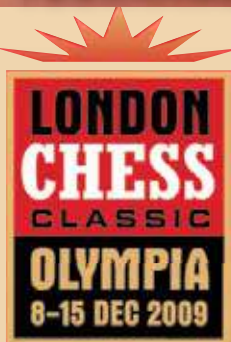
GM Nigel
Short

GM Michael
Adams

GM David
Howell

GM Luke
McShane

TOURNAMENT SCHEDULE & TICKET INFORMATION



<i>The London Chess Classic Schedule</i>		
Monday 7th December	Press Conference + Blindfold display	
Tuesday 8th December	Round 1	2.00pm
Wednesday 9th December	Round 2	2.00pm
Thursday 10th December	Round 3	2.00pm
Friday 11th December	Rest day + Community / School events	
Saturday 12th December	Round 4	2.00pm
Sunday 13th December	Round 5	2.00pm
Monday 14th December	Round 6	2.00pm
Tuesday 15th December	Round 7	12.00pm

Auditorium and GM Commentary (per day)	ADULT	JUNIOR *
	£10	FREE
Auditorium and GM Commentary Season Ticket (All 7 days)	ADULT	JUNIOR *
	£50	N/A

* Juniors must be under 16 on 07/12/09 and accompanied by a paying adult. Proof of age may be required

Tickets can be purchased online at www.londonchessclassic.com or www.chess.co.uk/shop - tickets can also be purchased by calling 020 7388 2404 or by visiting the London Chess Centre shop on Euston Road, London.

Purchasing an adult ticket gives you the following benefits:

- Admission to the London Chess Classic 2009
- Full access to the auditorium throughout the day's play. Moves will be displayed on a giant screen.
- Access to the Grandmaster commentary room. Commentators will include: Former British champions GM Julian Hodgson and GM Jonathan Rowson, plus GM Stephen Gordon, IM Lawrence Trent and IM Malcolm Pein.
Commentary line-up subject to change.

VENUE INFORMATION

Olympia is situated in the heart of West London. The nearest underground and overground station is Kensington (Olympia) which is on the District Line or a 15 minute walk from Hammersmith (District, Circle, Picadilly and Ham & City line). There is a reasonable amount of parking in the area and Olympia is located outside the Congestion Charging Zone. For further information on how to get to the tournament visit the Transport for London website - www.tfl.gov.uk

SIDE EVENTS

Several other tournaments and activities will be taking place over the same period as the Classic event. Online entry and a downloadable entry form are available from www.londonchessclassic.com. Entry into any side event (excluding the Foyer Blitz) will entitle you to watch the London Chess Classic and entry into the GM commentary room* *Space permitting, priority given to ticket holders.*

FIDE rated Open This will be a 9-round FIDE rated Open.

Weekend Classic (2-Day Swiss) Saturday 12th (3 rounds) and Sunday 13th December (2 rounds).

1-Day Rapidplay 1 Day Rapidplay on Sunday 13th December, (6-rounds).

Foyer Blitz Prix Foyer Blitz Prix events EVERY evening from 7.00pm - 9.30pm. Run as a 6 round - 10 minute blitz swiss system event, with the scores from your best 5 tournaments counting towards a Grand Prix prize! You will be able to turn up and play on the night.

FURTHER INFORMATION AT WWW.LONDONCHESSCLASSIC.COM



**LONDON
CHESS
CLASSIC**

**OLYMPIA
8-15 DEC 2009**

ADULTS £10
Children Under 16 FREE

The highest level Chess tournament in London for 25 years

8 PLAYERS ALL PLAY ALL

MAGNUS CARLSEN

World Number 3

VLADIMIR KRAMNIK

Former World Champion

HIKARU NAKAMURA

'H-Bomb' - US Champion

NI HUA

China

NIGEL SHORT

England Number 1

MICHAEL ADAMS

England Number 2

DAVID HOWELL

England Number 3

LUKE McSHANE

England Number 4

**4 WORLD CLASS PLAYERS FACE THE
4 HIGHEST RATED ENGLISH GRANDMASTERS**

Further information at www.londonchessclassic.com or call 020 7388 2404

HOW TO ENTER

1) Enter online. Visit:
www.londonchessclassic.com

2) Enter by phone.
Call 020 7388 2404
All Credit/Debit Cards accepted
(Monday to Saturday 9am - 6pm,
Sundays 11am - 5pm)

3) Complete the form below and
return together with a cheque made
payable to: Chess & Bridge Ltd,
369 Euston Road, London, NW1 3AR

First Name Last Name

Address

..... Postcode

Telephone (daytime) Email

ECF Grade / Elo rating (Ungraded? Please provide an estimate)

Tournament(s) entered (please tick as appropriate)

FIDE Rated Open **Weekend Classic** **Sunday Rapidplay** **Blitz Pass**

Foyer Blitz (Indicate above date of Foyer Blitz tournament(s) entered

ENTRY FEE (enclosed) £

Date of Birth

Enclose a large SAE if a reply is required for (tick as appropriate)

Accommodation List

Public Transport & Car Parking

Send completed form with cheque to: Chess & Bridge Ltd, 369 Euston Rd, London, NW1 3AR

The background of the poster features two stylized, high-contrast faces of chess players, one on the left and one on the right, facing each other. The faces are rendered in black and white outlines against a red and orange gradient background. A sunburst graphic is positioned above the central text box.

**LONDON
CHESS
CLASSIC
OLYMPIA
8-15 DEC 2009**

ENTRY FORM

FOR FESTIVAL SIDE-EVENTS, INCLUDING:

9 ROUND FIDE-RATED OPEN

TUESDAY 8TH - TUESDAY 15TH DECEMBER

THE WEEKEND CLASSIC

SATURDAY 12TH - SUNDAY 13TH DECEMBER

CLASSIC RAPIDPLAY

SUNDAY 13TH DECEMBER

FOYER BLITZ

7 TOURNAMENTS OVER 7 DAYS

All events held at the Olympia Exhibition Centre, London, W14

FREE ENTRY FOR ALL JUNIORS

LONDON CHESS CLASSIC

9-ROUND FIDE-RATED OPEN Tuesday 8th - Tuesday 15th December

Offering IM and GM norm opportunities.

SCHEDULE: 1 round per day except Friday 11th December (2 rounds).

PLAYING TIMES: All rounds start at 2.30pm except Friday 11th December (Round 4: 10am, Round 5: 4pm) and Tuesday 15th December (Round 9: 11am).

TIME CONTROL: Open: 40 moves in 2 hours + 30 minutes for all remaining moves.
Default time: 60 minutes after start of play.

BYES: Untitled players who wish to take one or two half-point byes in this section may do so, provided they give adequate notice. Normally this is not available for either the first or last round.

PRIZES: (GUARANTEED). *If entries permit the prize-fund will be increased.*

1st prize £2500 / 2nd prize £1500 / 3rd prize £750 / 4th prize £500 / 5th prize £500 / 6th prize £500.

Rating Prizes: <2300: £250 £150 £100, <2200: £250 £150 £100, <2000: £250 £150 £100.
Best Unrated Player - 1st prize: £150, 2nd prize: £100.

ENTRY FEES (*Players must be a member of a national federation. To join the ECF call 01424 775 222.*)

- GMs/IMs/WGMs/WIMs **FREE** - FIDE rated players **£100** - Unrated players **£125** - Juniors **FREE***

Chief Arbiter: Alex McFarlane. Festival Organiser: Adam Raouf (International Organiser)

THE WEEKEND CLASSIC Saturday 12th and Sunday 13th December

PLAYING TIMES: Saturday 12th December - Round 1: 10.30am-1.30pm, Round 2: 2.30pm-5.30pm, Round 3: 6-9pm. Sunday 13th December - Round 4: 11am-2pm, Round 5: 3pm-6pm.

BYES: A bye may be taken in any of rounds 1 to 4, provided this is requested before the tournament starts. However, a bye in round 3 can be requested on the Saturday of the event.

TIME CONTROL: 75 minutes for 30 moves plus 15 minutes for all remaining moves.

SECTIONS: OPEN, U170, U145, U120

PRIZES: (guaranteed prize-fund) Prizes in each section - 1st: £200 2nd: £100 3rd: £50 + £100 in grading prizes. **ENTRY FEES:** Adults: £25 in advance / £35 on the day. Juniors **FREE***

Chief Arbiter: Lara Barnes

CLASSIC RAPIDPLAY Sunday 13th December

PLAYING TIMES: Round 1: 10.30am- 11.30am, Round 2: 11.45am-12.45pm, Round 3: 1.00pm-2.00pm, Round 4: 2.15pm-3.15pm, Round 5: 3.30pm-4.30pm, Round 6: 4.45pm-5.45pm

TIME CONTROL: Each player starts the game with 30 minutes to complete all their moves.

SECTIONS: OPEN, U170, U145, U120

PRIZES: (guaranteed prize-fund) Prizes in each section - 1st: £100 2nd: £50 3rd: £30

ENTRY FEES: Adults: £15 in advance / £20 on the day. Juniors **FREE***

Chief Arbiter: Lara Barnes

* **Juniors go FREE!** To qualify Juniors must be aged under 16 on the first day of the tournament.

FOR ALL EVENTS, PAIRINGS WILL BE MADE USING SWISS MASTER

LONDON CHESS CLASSIC

FOYER BLITZ Every night from Tuesday 8th December to Monday 14th December

PLAYING TIMES: Each event starts at 7pm promptly, finishes 9.30pm.

TIME CONTROL: 10 minutes per player per game (FIDE Blitz rules apply)

PRIZES: (guaranteed prize-fund) 1st: £40 2nd: £20 + grading prizes. Further prizes depending on size of entry. **FOYER GRAND PRIX:** Your best score from any 5 blitz tournaments will be aggregated and the player with the best score will win £100 1st prize.

ENTRY FEES: £7 in advance, £10 on the night, or a Blitz Pass £40 (all 7 Blitz tournaments)

OTHER INFORMATION

Venue Details: All events connected to the London Chess Classic will take place at Olympia Exhibition Centre, Hammersmith Road, London, W14 8UX

Watching the London Chess Classic: All entrants to a London Chess Classic side-event (excluding the Foyer Blitz) receive FREE entry into the Auditorium and Commentary room if space permits after tickets have been sold on the day. There will be also live coverage on screens throughout Olympia.

Free Junior Entry: Juniors must be aged under 16 as of the first day of the tournament.

Mobile Phones: Mobile phones must be switched off in the playing hall. Competitors should avoid bringing phones to the venue. You may be immediately defaulted if your mobile phone makes any sound during play.

Right to refuse entry: The tournament controller reserves the right to refuse entry without being required to state a reason.

Disputes: In all matters, the controller's decision is final. An appeals committee will be formed in the event of a dispute which the Chief Arbiter cannot resolve.

Withdrawals: No refund can be given to any person withdrawing (or not turning up) to any event. Nor will any part refund be given to anyone wishing to withdraw while the tournament is still in progress. Full refunds will be given up to 22nd November; between 23rd November and the start of the event a £5 deduction will apply.

Refreshments: A full range of refreshments will be available at the venue as well as a good range of cafes and restaurants in the local area. Please note food purchased outside of Olympia will not be allowed to be brought into the venue.

Public Transport / Accommodation / Car Parking: For full details please see www.londonchessclassic.com or send a large SAE and indicate accordingly on the entry-form

Still got a question?

All questions relating to the London Chess Classic - 0207 388 2404 or info@chess.co.uk

All chess-related questions should be directed to Adam Raoof - adamraoof@gmail.com

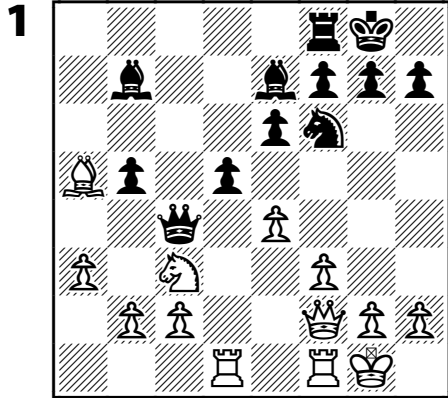
All venue-related questions to ECO - 020 7385 1200 or info@eco.co.uk



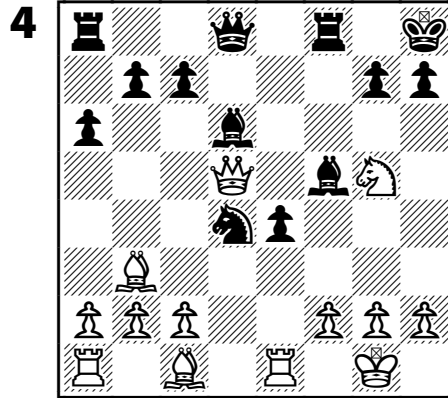
The London Chess Classic is pleased to support the creation of a new charity: Chess in Schools and Communities. The charity will be dedicated to the development of Chess in state schools, youth clubs and the wider community. It will also support training of chess teachers and give assistance to talented young players.

The POPULAR CHESS QUIZ PAGE

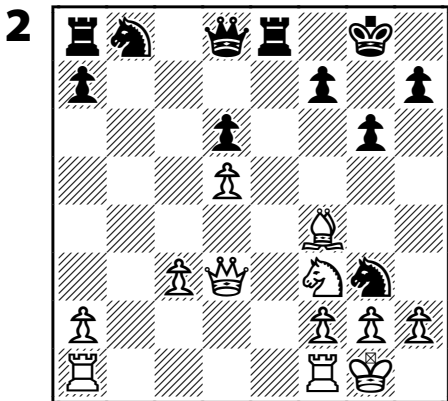
Find the best win!



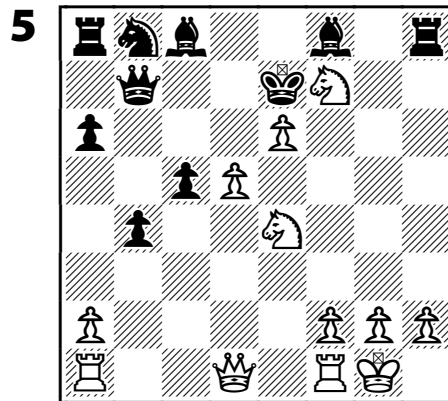
Black to move and win.



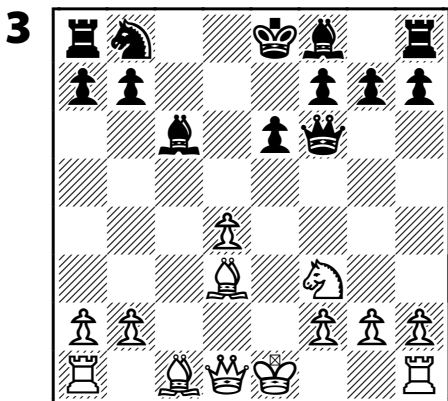
White to move and win.



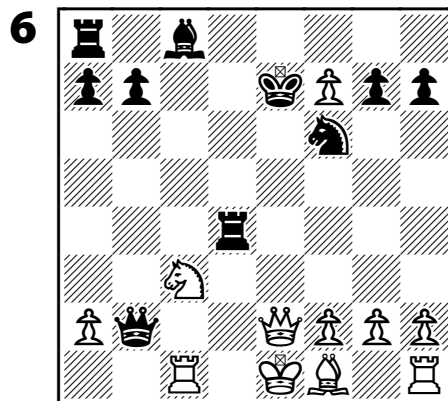
Black to move and win.



White to move and win.



White to move and win.



Black to move and win.



The Junior 4NCL 4 Nations Chess League Junior Championships





The FIDE Rated 4 Nations Chess League Junior Championships

28th-29th November 2009 & 27th-28th February 2010

The 4 Nations Chess League

is the most prestigious team chess event held in the UK.

Competitors include some of the world's best Grandmasters!

We want to introduce younger players to the excitement of the 4NCL, therefore entry to this championship is **FREE!**

The 4NCL provides **FREE** chess tuition between rounds for all competitors. Last year, our top coaches included International Masters Andrew Martin and Thomas Rendle, Grandmaster Nick Pert and Rosalind Kieran.



There are 4 sections:

Under 9 Under 11 Under 14 FIDE rated Under 18

There are 4 players in each team; school/club teams or simply groups of chess friends. However, we welcome entries from individual players and those with partial teams. We will find a team for every competitor that enters the championships.

The under 18 section will be FIDE rated and will attract the best UK junior players. The time control will be 40 moves in 100 minutes, then all further moves in 20 minutes. A coach will be available throughout the weekend to analyse under 18 games. 1st prize is **free entry into 4NCL division 3**. There is a trophy prize for the best under 14 team.

Saturday Round 1: 10.30-14.30 Round 2: 15.00-19.00
Sunday Round 3: 10.30-14.30

The under 14, 11 and under 9 time controls will be 60 minutes per person per game. Clocks will be used in all games. Professional coaching will be provided for all under 14, 11 and under 9 competitors for an hour before the start of each round.

Saturday Round 1: 10.30-12.30 Round 2: 13.30-15.30 Round 3: 16.30-18.30
Sunday Round 4: 10.30-12.30 Round 5: 13.30-15.30

Additional games will be arranged for less experienced teams and quick finishers.

THERE WILL BE A SPECTACULAR SATURDAY EVENING EVENT FOR ALL COMPETITORS!

**The Championships will be held over 2 weekends,
at the spectacular De Vere Venues Wokefield Park, Berkshire.**

28th-29th November 2009

27th-28th February 2010



Set in the Berkshire countryside, Wokefield Park offers a unique environment for the 4NCL Junior Championships; the spacious modern Executive Centre and the traditional and regal Mansion House. The venue is easily accessed from junction 11 of the M4 (approximately 1.5h from London) and by train from Reading station. Free wireless internet is available throughout the venue. For the parents, there is a US PGA-standard 7000-yard championships golf course, plus driving range, putting green and luxury spa. The venue also offers a mini-gym and fishing. More local attractions are listed below.

We have negotiated special hotel rates for you:

2009: £44 one person in single or double/twin, £60 two people in double/twin
2010: £46 one person in single or double/twin, £62 two people in double/twin

Please contact the hotel directly to book your room:

Laura Melledew: lmelledew@deverevenues.co.uk 01189-334-076

Each team contains 4 players. Junior players can compete in any team and are not tied to their main 4NCL teams. Each team can register 10 players for their squad. The section that your team can enter is defined by the age of the oldest member of your team. Ages are taken as at 1st September 2009. Teams play all matches, but it is possible by prior arrangement with Claire Summerscale for a team to play on only one of the weekends. The full Junior Championship rules can be found on the 4NCL website: www.4ncl.co.uk.

Prizes include: Free entry into 4NCL 1st 2nd 3rd Best School Team Best Female Team

Contact Claire Summerscale with any questions: chessuk@btinternet.com 020-8874-0135

The organisers accept no responsibility for any damage, theft or accident to the person or property of anyone attending this event. They are unable to act in loco parentis for children and are not able to take responsibility for any child's actions, or for the actions of anyone that may affect your child. Parents/guardians/teachers, as appropriate, agree to the terms and conditions as set out in this entry form as a condition of their entry. Parents/guardians/teachers are responsible for their children throughout the entire duration of this event.

Entries must be received by 20th November 2009.

Send to: Claire Summerscale, 34 Merton Road, London SW18 1QX or email chessuk@btinternet.com

Please circle the section that you are entering: Under 9 11 14 18

Team Name:

Individual / partial team entry (please circle): y n

Team Manager/parent.....
(Name, Contact Telephone Number, E-mail address)

Register your players below. You can register additional players at a later date (up to 10 players).

Name, Date of Birth, Grade/rating (if applicable)

- | | |
|---------|----------|
| 1 | 6 |
| 2 | 7 |
| 3 | 8 |
| 4 | 9 |
| 5 | 10 |



The 4NCL Junior Championships at Wokefield Park



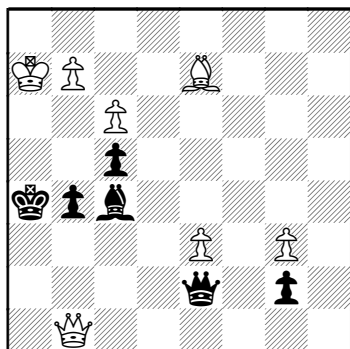
whether you are playing chess
or simply enjoying your weekend away



Local Attractions:

Royal Windsor
Legoland
Ascot Racecourse
Wellington Country Park
Savill Gardens
Reading Abbey
Beale Park

OCTOBER'S PRIZE PUZZLE ANSWER



White to play and win.

1.g4+!!

The assessment of opposite-coloured Bishop middlegames generally depends on who has the initiative. Uhlmann finds an excellent way to expose the black King.

1...fxg3+ 2.♔g1!

Black has to look after g5.

2.♔xg3? ♚xd6+;

2.♔g2 ♕h3+ 3.♔xg3 ♚xd6+
4.♔xh3 ♚d7+! draws.

2...♕g6 3.♔g2! ♔h6

3...♚f5 4.♚h8+ ♕h7 5.♚d4!

Simply threatening d7. 5...♚d7

6.♚g4+ ♚xg4 7.fxg4+ ♔xg4

8.d7±

4.♚h8+ ♕h7 5.♚f6+

Closing in for the kill.

5...♕g6 6.♚xg5+ 1-0



Best Quiz Answers for Page 22

1. 1... Bc5
2. 1... Ne2+
3. 1.Bg5 Bxf3 2.Qc1 Bb4+
3.Kf1 Bc6 4.Bxf6
4. 1.Qg8+
5. 1.d6+
6. 1... Re4



English Chess Federation (ECF) Junior Chess Magazine

The Right Move

Editor:

Andrew Martin

a.martin2007@yahoo.co.uk

ECF Director of Junior Chess & Education:

Peter Purland.

director.juniorchess@englishchess.org.uk

Proofers:

Ian Hunnab, Bob Long, Andrew Martin.

Design/Layout: Bob Long.