

The Right Move

#40



2010 JUN

English Chess Federation—Junior Chess Magazine

director.juniorchess@englishchess.org.uk

IAPS National Championships



Over the Easter holidays 125 players from all over the country took part in the 38th annual Prep School Chess Championships. The standard of play was outstanding in the Championship section and the individual and team competitions were very close.

Day 1

Teams arrived early on the Wednesday morning or on the previous evening and we all met for the opening meeting at 11.00am. There were 50 players in the Championship section and 75 players in the preliminary groups which were mini tournaments to sort the players into playing strength for the next two days.

The winners of the preliminary groups were Ben Wood (Aldro) group 1, Freya Finnegan (Cophthorne) group 2, Oscar Plant (Millfield) group 3 and Ivan Steblyuk (St. Anselms) group 4.

The Championship players played 3 rounds and the leaders after the first day were last years' joint winner Daniel Sutton from Great Walstead and Gwilym Price from Aldro with 3 wins out of 3. In the evening all the boarding players had activities organised by Mr Tuddenham which included snooker, pool, table football and table tennis.

Day 2

Rounds 4 and 5 were played in the Championship with Daniel Sutton maintaining his 100% score despite two more tough games for him. Harvey Paull from Twickenham Prep had moved into 2nd place on 4½.

Sections A, B, C and D started and they all played 3 rounds. The lower sections had a coaching session at the start of the day with a variety of themes were covered by the coaches. In the afternoon most of the schools went off to Chessington World of Adventure and had an afternoon of fun and excitement.

When we came back the children had a five a side football competition to look forward to and the adults had a special evening meal to look forward to. The winners of the football were St. Anselms from Bakewell in Derbyshire. Congratulations to them and thanks to Monsieur Lombardot for refereeing.

Day 3

The final two rounds of the Championship were played together with the final 3 rounds for the other sections. We also had coaching again for sections B, C and D.

Lunch was followed by the prize giving where the achievements of the players were rewarded with a wide variety of medals, trophies and book tokens. We were pleased to have grand master Matthew Turner to present the prizes.

Prizes

IAPS National Champion 2010 Daniel Sutton 6½/7

IAPS U.11 joint champions Aloysius Lip (Hallfield) and Daniel Muir (Reigate St. Marys) 5½/7

IAPS National Girls Champion Freya Finnegan (Cophthorne) 3/6 Section A

Section A winner Luke Thorne (St. Anselms) 6/6

Section B winner Daniel Gooda (Cophthorne) 5/6

Section C winner Kishen Singh (Twickenham Prep) 6/6

Section D joint winners Michael MaCleod (Hawthorns) and Gabriel Byrne (Aldro) 5/6



Best Game Prize

Neil Deo — Josh Higgs

1.d4 d5 2.Nf3 e6 3.Bf4 Nf6 4.e3 Be7
 5.Bd3 0-0 6.h3 b6 7.c4 dxc4 8.Bxc4 Bb7
 9.Nbd2 Nbd7 10.0-0 c5 11.Nb3 Rc8
 12.Rc1 Nh5 13.Bh2 cxd4 14.Nbxd4 Nc5
 15.Ne5 Nf6 16.Bb5 a6 17.Nec6 Bxc6
 18.Nxc6 Qe8 19.Nxe7+ Qxe7 20.Bd6
 Qb7 21.Bxf8 Rxf8 22.Bc4 Nfe5 23.b4
 Nd7 24.Qd4 b5 25.Bd3 Nef6 26.Qd6
 Rd8 27.Qc7 Qa8 28.Rfd1 g6 29.Be4 Nxe4
 30. Rxd7 Rf8 31.Qc6 Qxc6 32.Rxc6 Ra8
 33.Rcc7 Rf8 34.Ra7 Nf6 35.Rdb7 Nd5
 36.a3 h5 37.Rxa6 Nc3 38.Ra7 Kg7 39.Rc7
 Nb1 40.a4 Na3 41.a5 Nc4 42.Rab7 Nd6
 43.Rb6 Rd8 44.a6 Ne8 45.Rc1 Ra8 46.Ra1
 Nc7 47.a7 Rc8 48.Rb8 Rg8 49.Rxg8+ Kxg8
 50.a8=Q+ Nxa8 51.Rxa8+ Kg7 52.Rb8
 Kf6 53.Rxb5 Ke7 54.Rc5 Kd6 55.Rc1 Ke7
 56.b5 Kf6 57.b6 Kg7 58.b7 Kh6 59.b8=Q
 Kg7 60.Qe5+ Kh7 61.Rc8 g5 62.Rh8+ Kg6
 63.Rg8+ Kh7 64.Qg7mate

Hodgson Cup for the top U.13 team

1st= Hallfield and Nottingham High School 18½ **NATIONAL CHAMPIONS**

3rd Twickenham Prep 17½

David Bull Cup for the top U.11 team

1st= Hallfield and Nottingham High School 18½ **NATIONAL CHAMPIONS**

3rd Reigate St. Marys 15½

Congratulations to all the players on their excellent behaviour and many thanks to all the staff members who helped in the running of the tournament and all the supervision between rounds, particularly Mr. Turner, Mr. Bolan, Mr. Costeloe, Mr. Price and Mr. Tud-denham.

David Archer IAPS Chess Co-ordinator

CONTENTS
JUNE 2010

Certificate of Merit Package8
Editor's Foreword4
EPSCA Report7
Game of the Month.....4
June's Prize Puzzle.....6
LAPS National Championships.....1
Millfield International Tournament..10
Registration for Millfield11
Popular Chess Quiz/Answers.....9, 12

EDITOR'S FOREWORD AND BASIC ADVICE

by **Andrew Martin**
International Master

Welcome to **the Right Move** for June 2010. I hope you are all enjoying life and that your chess goes from strength to strength! Write to me at:

a.martin2007@yahoo.co.uk

We are here to help you!

Thanks, Andrew



A.M.

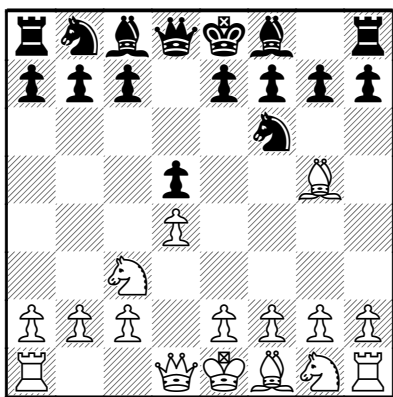
Short,N - Giri,A

[D01]

Amsterdam, 15.05.2010

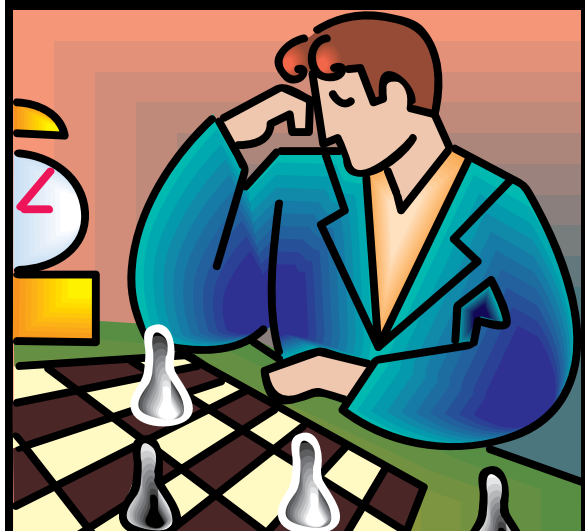
A recent series of matches between veteran Grandmasters and top Dutch youngsters has been going on in Amsterdam, sponsored by multimillionaire Joop Van Oosterom. Top of the bill is Nigel Short vs Anish Giri, Grandmaster at 15 years old. The games do not disappoint.

1.d4 Nf6 2.Nc3 d5 3.Bg5!?



The Veresov Opening, a rare choice at Grandmaster level. Black is supposed to have many decent defences at his disposal. By blocking the pawn on c2, White often finds it difficult in the Veresov to find

GAME OF THE MONTH



the right squares for his major pieces in the early middlegame.

3...Nbd7 4.e3 e6 5.Qf3!?

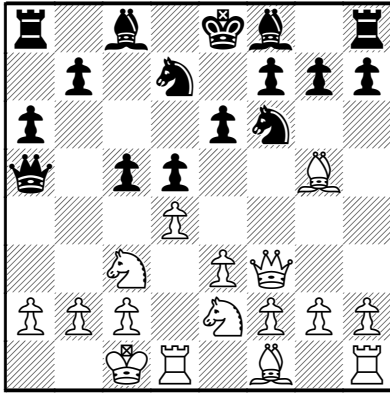
Short's strategy for the 4-game mini-match seems to have been to avoid mainstream theory as much as possible and to force the youngster to play unusual positions. This early Queen move looks dangerous as a surprise weapon.

5...c5

5...Be7 6.0-0-0 c6 7.e4 dxe4 8.Nxe4 Nxe4 9.Bxe7 Qxe7 10.Qxe4 Qg5+ 11.Kb1

Nf6 12.Qe1 0-0 13.Nf3 Qf4 14.Bd3 Rd8 15.Ne5 g6 16.c3 Bd7 17.g3 Qh6 18.h4 Be8 19.f4 Qf8 20.g4± Haupt,G (2263)-Striebich,R (2190)/Dresden 2009.

6.0-0-0 a6 7.Nge2 Qa5

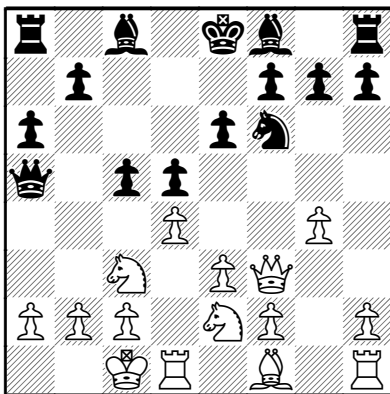


8.Bxf6

Momentum must be maintained as Black is simply threatening to avalanche the white King with pawns: ...c5-c4, ...b7-b5 etc.

8.Kb1 b5 9.e4 Bb7 10.e5 Ne4 11.Nxe4 dxe4 12.Qh5 Qc7 13.Nf4 cxd4 14.Rxd4 g6 15.Qh4 Bg7 16.Be2 Qxe5 17.Rhd1 h6 18.Nxg6 fxd6 19.Be7 Bd5 20.f4 exf3 21.Bxf3 g5 22.Qf2 Kxe7-+ Planinec,A-Bertok,M/Novi Travnik 1969.

8...Nxf6 9.g4

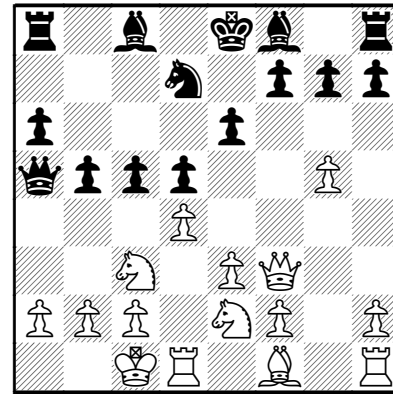


9...b5

9...cxd4! looks very reasonable for

Black now and conforms to the principle that a distraction in the centre will prevent White from executing his K-side attack 10.Rxd4 Bd7 11.g5 Ne4 12.Kb1 (12.Nxe4 dxe4 13.Qg4 (13.Qxe4 Bc6) 13...Qxa2) 12...Nxc3+ 13.Nxc3 Bd6.

10.g5 Nd7



11.Nf4

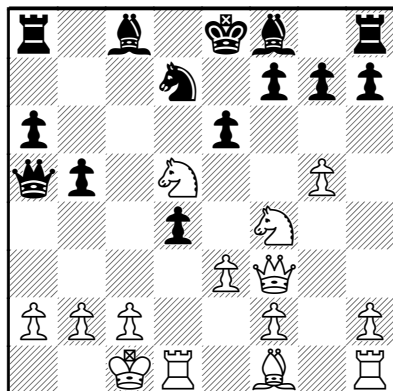
11.e4! This is not a perfect game, but it is rather entertaining. I'm sure that Short considered this central break very seriously and it does look like a good idea: 11...b4 12.exd5 Bb7! 13.Ne4 exd5 (13...Bxd5 14.Nf4 Qxa2 15.Nxd5 exd5 16.Nd2 Qa1+ 17.Nb1 Be7 18.Re1) 14.Nxc5 Bxc5 15.dxc5 Qxa2 (15...0-0 16.c6 Bxc6 17.Nd4) 16.Qe3+ All very unclear. However, the game continuation justifies White's choice, as Giri mistimes his central action.

11...cxd4?!

11...Bb7! is safer and once again, seem to give Black good play. White can tee up a sacrifice on e6 after 12.Bh3 but now comes 12...cxd4! and Black is in very good shape: 13.Rxd4 (13.exd4 b4! 14.Nxe6

bxc3 15.Nxg7+ Bxg7 16.Bxd7+ Kd8
17.Qxf7 Qxa2-+) 13...Ne5 14.Qg3
b4

12.Ncxd5



to provoke Nigel Short into such a sacrifice is foolish indeed. Black's King looks like it is going to perish in the centre.

12...exd5 13.Qxd5 Ra7 14.Bh3

14.Qxd4 Rc7 15.Nd5 Rc6 16.Bh3 (16.Kb1 Rd6) 16...Rd6.

14...Be7?

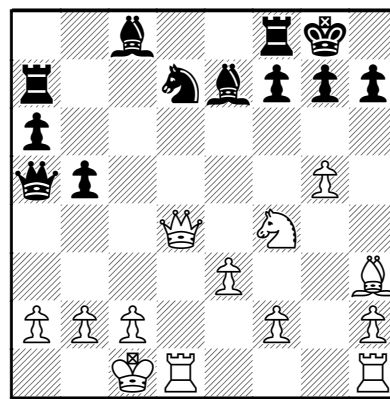
14...Qd8! was the best defensive chance, but Giri has clearly been rattled by allowing the sacrifice. Is it so easy now for White to break through?

15.Qxd4 (15.Qe4+ Qe7 16.Qxd4 Qc5) 15...Rc7 16.Rd2 Rc4! 17.Qd3 (17.Qd5 Qc7 18.Rhd1 Nb6 19.Qd8+ Qxd8 20.Rxd8+ Ke7÷) 17...Bb4 18.c3 Qc7 19.Rhd1 Bxc3 20.bxc3 Rxc3+ 21.Rc2 Rxc2+ 22.Qxc2 Qxc2+ 23.Kxc2 g6. This seems holdable.

15.Qxd4

By contrast, it is one-way traffic from now on. Short simply wins his winning position.

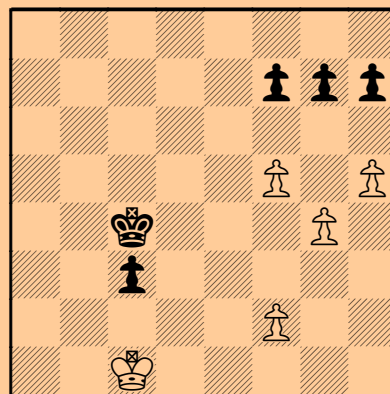
15...0-0



16.Nh5 f6 17.Be6+ Kh8 18.Qxa7 Bc5 19.Qa8 Ne5 20.gxf6 gxf6 21.Qg2 Ng6 22.Qc6 Bb4 23.Kb1 1-0

Perhaps the Veresov can still be wheeled out from time to time, but only as a surprise weapon. 23.Bxc8 Qxa2 24.Qxa6 would also win comfortably.

June's PRIZE PUZZLE



Lasker, Ed - Molle Berlin 1904

I would be keen to see how you assess this position. Black to move, got it all wrong in the game, but he did not have to suffer for his mistake: **1...h6?? 2.f4??** It just goes to show that even masters do not necessarily play pawn endings well. [White could actually win this position with **2.f6! gxf6 3.f4 Kd4 4.g5 fxg5 5.fxg5 Ke5 6.gxh6 Kf6 7.Kc2] 2...f6** Normal service has been resumed. **3.g5 Kd4** What should Black play in that case? **0-1**

EPSCA REPORT

The Wey Valley (Surrey) Under-9 Chess Team achieved an outstanding result in the EPSCA (English Primary Schools Chess Association) National Championships last weekend, winning by the narrowest of margins. The tournament took place at Warden Park School in Sussex on April 24th. It was the ultimate test of skill and nerve for England's top 12 Under-9 teams, as they went into combat hoping to be crowned England champions.

The Surrey youngsters, who won the Southern Zones Qualifier to earn their place in the National Finals, got off to a slow start and were in fourth position after the first round. Unimpressed with the team's opening performance, organiser and coach Mike Basman whipped the squad into shape with a motivational pep talk. This seemed to do the trick and after round two out of three, Surrey were within striking distance of the winners' trophy and the coveted national title.

Tharshan Kuhendiran (Burlington Junior, New Malden) and Andrew Smales (Feltonfleet Prep), were powerhouses on the top two boards, both winning all three of their games. Also providing flawless results were Akshaya Kalai (Christ Church, New Malden), Max Elliott (Thames Ditton Junior School), Shrey Sachdeva (Homefield) and Anna Purvis (Rowan). Anna's third round triumph against main rivals Barnet proved to be decisive.

It all came down to the wire, with first place hinging on the last game between Kent and Barnet. Proceedings went Surrey's way as Barnet conceded and after the closest competition in history, the talented Surrey juniors emerged victorious. Final scores out of a possible 36 were Wey Valley 27, Kent 26½ and Barnet 26



English Chess Federation Certificate of Merit Package

The ECF Certificate of Merit Package is designed to help teachers prepare their pupils to pass an exam which leads to a Certificate of Merit (COM). The first DVD and booklet should enable a teacher with no knowledge of the game to learn the basics. Eventually it will be possible to take exams at higher levels. Levels 1 to 3 are all covered by the DVD and booklet. Older pupils can work by themselves and the exams are taken only online. Each pupil passing an exam will receive a certificate and a badge. The package contains:

- 1 COM DVD by Andrew Martin, International Master
- 1 COM booklet by Andrew Martin
- 1 copy of 'Chess Openings - Your Choice!', written by Stewart Reuben
- 1 one-year Premium Membership of ChessCube. This is an online service where, for example, people can play other members or access educational material. The web site is at <http://ecfclub.chesscube.com>
- 1 one-year Standard ECF Membership via application form
- 1 COM exam entry fee
- Zip file of the last six months' editions of 'The Right Move' an ECF online magazine for juniors
- Various sundry ECF publications on various subjects, such as organising a simultaneous display
- 1 back issue of Chess Magazine, subject to availability
- The first 100 applicants for the package will receive an autographed copy by the author of the COM booklet and of Chess Openings - Your Choice!

The cost of the complete package is £50 (+p&p). Each entry for all COM exams costs £6 (one credit). A bulk order of 30 credits costs £150. These prices include VAT - the ECF VAT Registration Number is 195643626. Please note - schools can reclaim VAT

Payment Options

Payment for CoM items can be made using any of the following methods -

1: by invoice ; 2: via PayPal ; 3: by cheque ; 4: by credit card

For more information on the above, please contact us via the contact information below.

To order individual items in the package, please visit www.englishchess.org.uk and follow the link to the shop

Certificate of Merit: 07805 515 732 | General Enquiries: 01424 775222

Email: com@englishchess.org.uk | Websites: www.englishchess.org.uk, www.certificateofmerit.org.uk



MILLFIELD
STREET
SOMERSET
BA160YD

Telephone:
01458 442291
Facsimile:
01458 447276

April 21st 2010

Dear chess team manager,

I am writing to invite you to the Millfield International Chess Tournament once again this year. Many of you have let us know how much more practical it would be to attend if the tournament were in term time. From our point of view, this is clearly more challenging, but the good news is that we are going to give it a go, and we have settled on October 9th and 10th, starting at 9am on Saturday and finishing at 5pm on Sunday. I very much hope that you will be able to join us for what should be another hugely enjoyable event, and that you will encourage other schools to try out the Millfield chess experience. We'd be happy to hear from schools who would have trouble assembling a team of 12— if we can put together one or more teams by combining schools, then we will.

So long as players are studying in school, they are eligible to take part. This means that there can be a broad age range (from about 10 to 18) and a very wide ability spread. For example, a player with a grade of 100 might be on board 12 from some schools and board 1 from others. Each game is 1 hour 50 minutes (that is, 55 minutes each) and there are seven rounds of jamboree pairings, with the teams split between Championship and Major divisions from the third round onwards. There is also a reserves competition.

Unfortunately, we cannot offer accommodation, but I will endeavour to help out in locating and booking hotels or hostels if necessary. I can also arrange transfers to and from Bristol airport and local accommodation. One side effect of hosting in term time is that we will not be able to offer Sunday breakfast; however, we may be able to offer Saturday breakfast and Sunday dinner, so please let me know if this would be helpful. We will also be offering a stimulating programme of activities on Saturday evening, but, since all our students are in residence, this will undoubtedly have a different flavour to previous years.

I would appreciate your returning the enclosed registration form as soon as possible so that I have a good idea of the numbers to expect. I am also enclosing a sheet for team profiles for the booklet.

Please do let me know of any other schools that may be interested in taking part, and I will contact them directly. Otherwise, of course pass on my e-mail address (bpb@millfieldschool.com) to potential new team managers, or send them a copy of the registration form. In particular, I would very much like to involve more girls in the tournament: teams from girls' schools and mixed teams will be especially welcome! And of course do not hesitate to contact me with any questions or suggestions.

Everyone involved in chess here looks forward to seeing you again in the Autumn.

With all best wishes,

Brian Brooks.

Registered Charity No. 310283

Millfield is a Company Limited by guarantee and registered in England. Company Number: 522385. Registered Office: Street, Somerset BA16 0YD

MILLFIELD INTERNATIONAL CHESS TOURNAMENT
9th-10th October 2010

..... School accepts / is unable to accept this invitation

TRANSPORT

If travelling by train or aircraft and require pick-up, please advise time of arrival. Please note that there will be a charge for this service to cover transport costs.

Transport required: YES / NO

Details:

MEALS

The cost includes Saturday lunch, Saturday supper and Sunday lunch.

We wish/do not wish* to have the meals provided at school at £13 per head.

* delete as appropriate.

ENTRY FEE

Cost per team 12 £80 £120 for two teams

Total enclosed:

Cheque made payable to Millfield, please.

TEAM MANAGER

SCHOOL ADDRESS

Tel. No. School

 Home

Fax School

Number of teams of 12 Number of Reserves.....

Accompanying Adults

Accommodation

Let me know if you need an accommodation list.

Please return to:

Dr. Brian Brooks
Tutor in charge of Chess
Millfield School
Street
BA16 0YD
Tel. 01458 444216

Additional information:
Mr. Matthew Turner Tel: 01458 837557
e-mail: matthewturner@millfieldprep.com

J
C
C
E

M
O
O
N



POPULAR QUIZ



Best Answers to Quiz on page 9

1. 1... Rxd2
2. 1. Qxf8+ Kxf8 2. Bh6+ and the black Q is lost
3. 1... Nxa2 2. Rxa2 Bb4+ 3. Bd2
4. 1... Qxg2 2. Be4
5. 1. Nxc6
6. 1. exd6 Bxd6 2. Qxd6

ANSWERS

The Right Move

Editor:

Andrew Martin • a.martin2007@yahoo.co.uk

ECF Director of Junior Chess & Education:

Peter Purland.

director.juniorchess@englishchess.org.uk

Proofers: • Bob Long, Andrew Martin.

Design/Layout: Bob Long.

**English Chess
Federation (ECF)
Junior Chess Magazine**

