

# The Right Move



English Chess Federation—Junior Chess Magazine  
director.juniorchess@englishchess.org.uk

2009  
JAN.

## Quadrangular 2008 Liverpool

The annual event involving teams of 26 (6 under 16, 10 Under 14 and 10 under 12s) from Scotland, Wales, Northern England and the English Midlands took place at Greenbank School on the weekend of 13/14 December. Unfortunately the Midlands did not have an only 5 Under 14 team did

There were Saturday, Northlands v Scotland by Midlands Wales v Scot-

Round One defeat Wales 5- (U14) and 8½- Scotland won 7½-2½ but the at U12 6-4.

Round Two continue their beating Midlands 9-1 (U12). counted for U12 and 4-2 at lucky to get way

HAPPY  
CHRISTMAS  
AND A CHESS  
FILLED  
NEW YEAR

*I hope you all have a good break over the holiday period and return to the fray fully refreshed ready to do battle in the New Year. I hope to see as many juniors as possible in the coming months.*

**Peter Purland  
Junior Director**

U16 team and 14s but with a Scottish friends compete.

two rounds on v Wales, Midlands followed v North and land.

saw the North 1 (U16) 7½-2½ 1½ (U12) whilst their U14 match Midlands won

saw the North winning ways lands 8-2(U14) Scotland ac- Wales 9-1 at U16, but were with a 5-5 draw

at U14. This left Scotland and the North undefeated and head to head on Sunday. The North had a sick player and were forced to default a board but in the spirit of the match Scotland asked that the actual board (5) be defaulted so 5 players did not have to move up. If the North expected an easy ride Scotland was not prepared to lie down and with two games to go the score was 4½-3½ for the North. Two draws resulted and the North had won.

Meanwhile Scotland was getting their revenge in the U14s and came home 6-4 to win that section whilst after two hours no U16s had finished. Here the North held their nerve and good endplay game saw them home 4-2. Wales and the Midlands also had an exciting match with Wales winning 5½-4½ at U14 and the U12 match being drawn leaving Midlands U12s as runners up. Three Scottish players, Jonathan Edwards, Callum Dickson and Peter Sanders got maximum points as did Nathan Talbot, Abigail Pritchard, Steven Jones, Peter Gerlagh, James Bowler, James Walsh and Matthew Walsh.

Congratulations to all these players and also to all who took part for an excellent weekends chess played in a friendly, sporting manner.

## Junior Squad News

### New Members

As well as the 2008 English Primary Schools Team, the following players have

qualified for entry to the junior squad by doing well at two nominated tournaments. The second qualifying tournament is the one named.

Millfield 08: Steven Jones, Georg Vikanis.

British Championships 08: Megan Cleeves, Jennifer Ehr, Peter Gerlagh.

British Rapidplay 08: Oliver Demerger, Aidan McGiff, Michael Littlewood, Athar Mehmood, Martin Oliver, Jade Stirrup.

The committee give all these players heartiest congratulations and hope they will enjoy many good years of chess with the squad.

### Forthcoming Events

English Closed Championships at Yateley Manor School 31st Jan, 1st Feb.

You should already have received an invitation by email. If not please contact Peter Purland.

[petepurland@btopenworld.com](mailto:petepurland@btopenworld.com)

West of England Championships, Swindon, 21st-22nd February.

Information from Bev Schofield 01793 487575

#### CONTENTS JANUARY 2009

<b>Quadrangular 2008 .....</b>	<b>1</b>
<b>From Andrew Martin.....</b>	<b>3</b>
<b>Game of the Month .....</b>	<b>3</b>
<b>January Prize Puzzle .....</b>	<b>7</b>
<b>Basman and Wade .....</b>	<b>8-9</b>
<b>Chess Quiz Page .....</b>	<b>11</b>
<b>Best Quiz Answers .....</b>	<b>12</b>



## EDITOR'S FOREWORD AND BASIC ADVICE

by Andrew Martin  
International Master

Welcome to 2009! We intend this to be a great year for **The Right Move** and we hope to have some news soon on the free chess sets for schools. Stay tuned! As usual, we welcome contributions. Just get them to Andrew:

Send your contributions to:

[a.martin2007@yahoo.co.uk](mailto:a.martin2007@yahoo.co.uk) by the 15th of each month. I look forward to receiving them.

*Andrew*



### SOMETHING AGAINST THE SPANISH

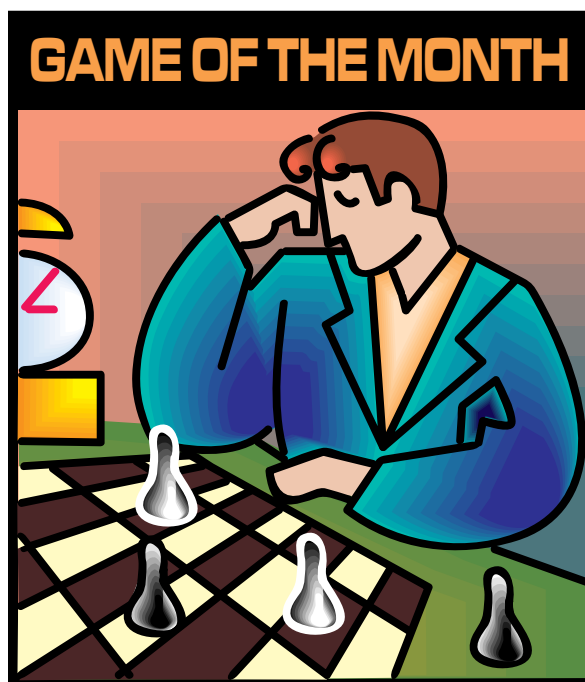
**R Lopez Martinez - José Raul Capablanca**

[C64]

Buenos Aires casual, May 1911

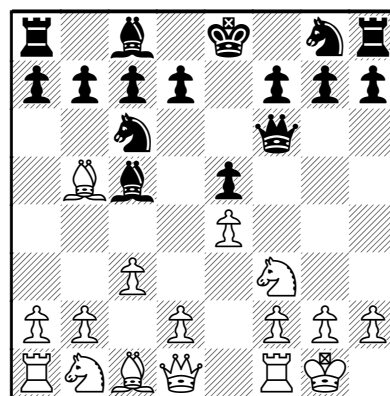
1.e4 e5 2.♘f3 ♘c6 3.♙b5 ♙c5 4.c3 ♚f6!?

The strongest players are still trying to find the best defence to the Ruy Lopez. Let us not concern ourself with this rarified level as it is not every day that we will



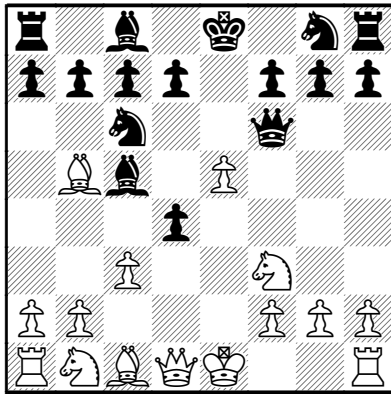
have to face Leko or Kasparov. Instead, I want to suggest an interesting line of play which isn't easy to meet and gives Black active counterchances. It is especially good against players who have little sense of danger or do not know how to create counterplay in difficult positions.

5.0-0

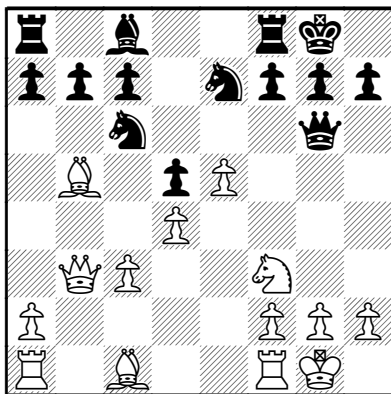


Time to rewind 97 years now and see how Lopez Martinez deals with the early Queen excursion. Energetic play will be needed to expose the defects of this sortie. Oh, and thinking for oneself at move five. Not everyone is geared up for that.

5.d4 exd4 6.e5.



This is a bit more like it. White takes full advantage of the awkwardly placed black pieces. Nevertheless, Black is able to survive. 6...♖g6 (6...♘xe5? 7.♕e2) 7.cxd4 ♘xd4!? (There is a rather solid alternative available : 7...♙b4+ White will obtain the two Bishops, but in the face of light-squared counterplay, will not find it easy to make his small advantage count: 8.♘c3 d5 9.0-0 ♘ge7 10.♖b3 ♙xc3 11.bxc3 0-0



The critical position. I analyse three White tries:

12.♙a3. The obvious attempt to make his Bishop work. (12.♙e2 ♖e8 13.♖b1 ♖b8 14.♖xg6 ♘xg6 15.♙e3 ♙f5 16.a4 ♘a5 17.♘d2±;

12.♖e1 ♙h3 13.♙f1 ♖ab8 14.a4 ♖fe8 15.a5 a6 16.♙f4 ♙g4∞) 12...♙h3! 13.♘e1 ♖fb8!?∞ ...a6 and ...b5 is coming, possi-

bly followed by occupation of c4.) 8.♘xd4 ♖b6 9.♙e3 (9.e6!? is supposed to refute 7...Nxd4 but helped by *Deep Fritz* 8, I have been able to find defences for Black: 9...♙xd4 10.exd7+ ♙xd7 11.♙xd7+ ♘d7 12.♙e3 c5 13.♘d2 ♘f6 (13...♖xb2 14.♘b3 ♖d8 15.♘xd4 ♖b4+ 16.♙f1 cxd4 17.♙xd4 ♖c4+ 18.♙g1 ♙e8 19.♖e1+∞ ♙f8; 13...♘e7 14.0-0 ♖hd8 15.♙xd4 cxd4 16.♖g4+ ♙e8 17.♖xg7 ♖g6 18.♖h8+ ♖g8 19.♖e5 ♖d5 20.♖e2 d3 21.♖f3 f5 22.♖fe1 ♖c8∞) 14.0-0∞) 9...♙xd4 10.♖xd4 ♖xb5 11.♘c3 ♖c6 (*Deep Fritz* = *Deep Greed* so it's unsurprising that the machine suggested 11...♖xb2. This is unplayable: 12.♖c1 (12.♖b1 ♖c2 13.♖c1 ♖g6 14.♘d5) 12...c6 13.♖g4 g6 14.0-0 d5) 12.♘d5 ♘e7 13.♘xe7 ♙xe7 14.0-0 ♖g6 15.♖ac1∞ White's compensation is obvious. Although a pawn down he has a massive lead in development and chances to put Black away on the dark squares at any stage.



**José Capablanca**  
World champion 1921-1927

This reminds me of the Steinitz line of the Scotch: 1.e4 e5 2.Nf3 Nc6 3.d4 exd4 4.Nxd4 Qh4!? – there Black has to de-

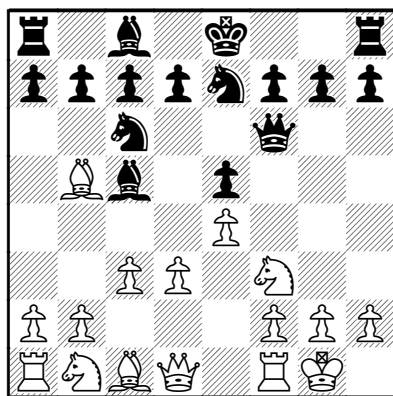
find the same difficult positions, but if he does so, then he can easily emerge with a decisive material advantage.

15...c6 16.♖h4+ f6 17.♖c4 (How big is the white advantage after 17.♖fe1 ♔f7 18.♖c4+ d5 19.exd6+ ♕e6 20.♖b4 ♖hb8 21.♕f4 ♕d5 22.♖e7+ ♔g8 23.♕g3 b6 24.♖ce1 ? This was the critical line.) 17... d6 18.exd6+ ♔f7 19.♖b4 ♖f5 20.♖d1 ♖d8 21.♖c4+ ♔g6. Really pushing the boat out. 22.g4 ♖f3 23.♖c2+ ♔f7 24.♖f4 ♖h3 25.♖b3+ ♕e6 26.♖xb7+ ♔g8 27.♖xc6 g5 28.d7 (White misses a win: 28.♖e4 ♖f3 29.♖a4 ♕d7 30.♖c4+) 28...♕xg4 29.♖xf6 gxf4 30.♕d4 ♖xd7 31.♖h8+ ♔f7 32.♖g7+ ♔e8 33.♖e1+ ♕e6 34.♖h8+ ♔f7. A very lucky escape for Gretaarsson, but as I have pointed out, Black has improvements back on move seven. Even if he knows everything, White can expect no more than a nominal edge. *1/2-1/2 Rytshagov, M (2485)–Gretaarsson, H (2470)/Gothenburg 1997.*

### 5...♖ge7

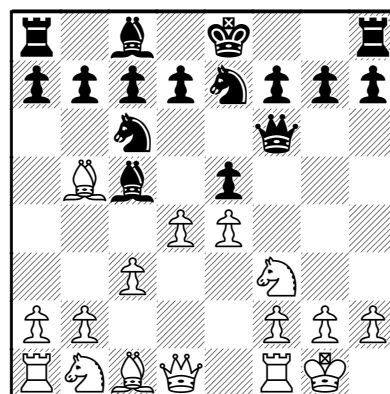
The Knight might be heading to g6 and maybe even to f4.

### 6.d3

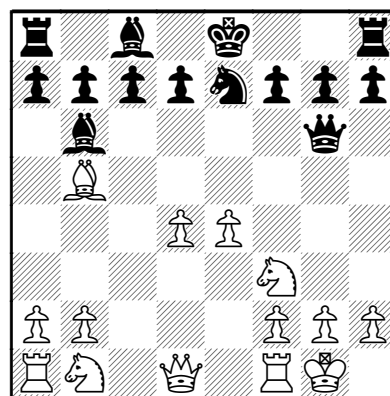


Too much respect. White has to sac a pawn somewhere with d4; we'll see that later.

### 6.d4



Now we see White delaying d2–d4 for a move, waiting until he has castled. Alekhine analysed this continuation a long time ago, considering that Black gets equality in the main line. I consider this variation the most likely way for your opponents to go, should you venture 4... Qf6!? 6...exd4 7.♕g5 ♖g6 8.♕xe7 ♖xe7 9.cxd4 ♕b6



### 10.♖c3.

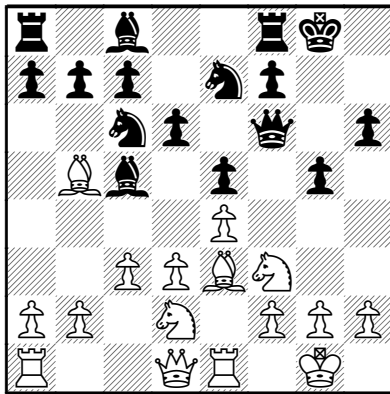
But White has the centre Alexander?! 10...0-0 11.♕d3 d6 12.e5. Playing on the dark squares seems prospectless for White. He should keep the tension: (12.♖d2 or simply play; 12.♖a4 with equality.) 12...♖h6 13.h3 dxe5 14.dxe5 ♕e6. Black is very comfortable indeed. The traditional Knight manoeuvre ...Ng6–f4, will give him prospects of attack.

15. ♖e2. Especially if White puts pieces in the way of this Knight! 15... ♘g6 16. ♖e4 c6 17. ♙c4 ♜ae8 18. ♜ae1 ♞f4 19. ♞e2? He hates his position and so he makes a mistake. Understandable. But if White plays rationally with, say (19. ♙xe6 he is still worse: 19... fxe6 20. ♜d1 ♞h5 21. ♞d4 ♙c7 22. ♜fe1 ♞g5) 19... ♘g2! Cute tactics! 20. ♙xg2 ♞xh3+ 21. ♙g1 ♙xc4 22. ♞f4 ♞g4+ 23. ♙h2 ♙xf1 24. ♜xf1 ♜e6 25. ♙h1 ♜h6+ 26. ♞h2 ♞h4. That is that. We have only been able to alert the reader to the possibility of 4... ♚f6! in this brief article and it is certainly no refutation of the Spanish, but below 2300 level, I think this variation could give White a real headache. 0-1 Quispe Santacruz, J (2213)–Soppe, G (2474)/Rosario 2001.

**6...h6**

It is necessary to prevent Bg5.

7. ♙e3 d6 8. ♞bd2 0-0 9. ♜e1 g5!

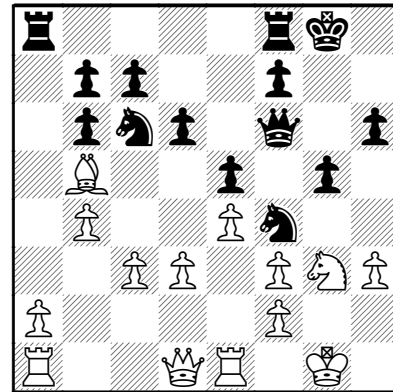


Black has been allowed to develop in peace and now he starts the charge. it could be a club game between you and me. Hopefully, I will be playing Black!

10. ♞f1 ♙g4

Preparing for *Winter–Capablanca 1919*, a game everyone knows. If you are feeling left out at this point, your knowledge of the classics is deficient.

11. ♞g3 ♞g6 12. b4 ♙b6 13. ♙xb6 axb6 14. h3 ♙xf3 15. gxf3 ♞f4→



A dream position for Black from this line. His Queen stands on just the right square teaming up with the Knight magnificently. Of course White is pussyfooting around but this is simply what a lot of players will do.

16. ♙xc6 bxc6 17. ♙h2 ♜a3 18. ♞d2 ♜fa8

Very good indeed. Black controls the whole board.

19. ♞f5 c5 20. bxc5

20. b5 d5 21. h4?! d4 22. hxg5 hxg5 23. cxd4 ♞h8+-+

20...dxc5

**LEGEND CODES**

- RR = Editor's note.
- # = Mate.
- ± = Slight advantage to White.
- N = Novelty.
- = The only move.
- = Initiative.
- ∞ = Unclear.
- +– = White is winning.
- + = Black is winning.
- ± = White has the advantage.

Exposing d3, a further trump for Black.

21.♖ed1 ♔h7 22.♞ac1 ♞g6 23.♜g3 ♞xa2 24.♞c2 ♞e6 25.♜f5 ♞xc2 26.♞xc2 ♞a2 0-1.

The game turned into a rout. Black prosecuted the attack with commendable energy.

♙c5 5.0-0 ♜ge7 6.d3 h6 7.♙e3 ♙d6 8.♜bd2 a6 9.♙a4 b5 10.♙b3 ♜a5 11.♙c2 c5 12.d4 cxd4 13.cxd4 ♜g6 14.♞b1 0-0 15.dxe5 ♜xe5 16.♜xe5 ♙xe5 17.f4 ♙d4 18.♞e2 ♙b7 19.e5 ♞b6 20.♙xd4 ♞xd4+ 21.♞f2 ♞ac8 22.♙d3 ♙d5 23.b3 ♞c3 24.♙f5 ♞fc8 25.h3 ♞e3 26.♞g4 ♙e6 27.♞d1 ♙xf5 28.♞xf5 ♞e2 29.♞df1 ♞xd2 30.♞g4 ♞xf2 0-1

## LATEST GAMES OF C64

December 2008

1.e4 e5 2.♜f3 ♜c6 3.♙b5 ♙c5 4.c3 ♞f6

**Ilievski,Borce (2222) - Stojcevski,Zoran (2393)**

FRM-chT 17th Struga, Aug. 2008

1.e4 e5 2.♜f3 ♜c6 3.♙b5 ♙c5 4.c3 ♞f6 5.0-0 ♜ge7 6.d3 h6 7.♙e3 ♙b6 8.♜bd2 d6 9.a4 a6 10.♙c4 ♜g6 11.♙xb6 cxb6 12.♞e1 ♜f4 13.♞e3 h5 14.h4 ♜d8 15.♜f1 ♙g4 16.♜1h2 ♞h6 17.d4 ♞g6 18.g3 ♜h3+ 19.♔g2 ♞h6 20.♞d2 g5 21.hxg5 ♜xg5 22.♜xg4 hxg4 23.♜xg5 ♞xg5 24.♞h1 ♞xh1 25.♔xh1 ♜c6 26.♔g1 ♞h5 27.♙f1 0-0-0 28.♙g2 ♞g5 29.b4 ♔c7 30.b5 axb5 31.axb5 exd4 32.cxd4 ♞xb5 33.♞c3 ♔b8 34.♙f1 ♞b4 35.d5 ♞d4 36.♞d3 ♜e5 37.♞xd4 ♜f3+ 38.♔g2 ♞h8 39.♙b5 ♞h2+ 40.♔f1 1-0.

**Sha,Siyu (1904) - Walter,Thomas (2108)**

Nuremberg LGA Cup 5th, Sep. 2008

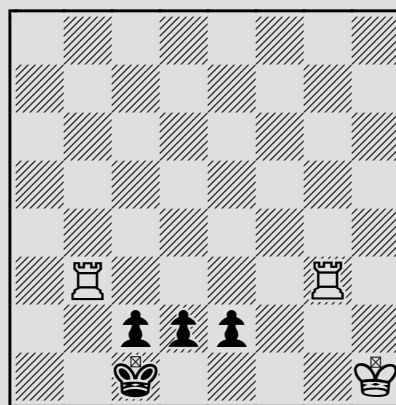
1.e4 e5 2.♜f3 ♜c6 3.♙b5 ♞f6 4.c3

**Nikolov,Sasho (2398) - Georgiev,Steljan (2121)**

Kesarovski Georgiev mem, Sep. 2008

1.e4 e5 2.♜f3 ♜c6 3.♙b5 ♙c5 4.c3 ♞f6 5.0-0 ♜ge7 6.♞e1 h6 7.d4 ♙b6 8.♜a3 0-0 9.♜c4 d6 10.a4 ♙g4 11.♙xc6 ♜xc6 12.d5 1-0.

### JANUARY'S PRIZE PUZZLE



**A SERIES HELPMATE IN 4 MOVES**

by Sir Jeremy Morse.

Black makes four moves in a row and then

White checkmates in one move!

What are those four moves?

# BASMAN



Here's a bit of information about the man who drives the UK Chess Challenge, taken from Wikipedia. You may not know how famous he is!

## Michael John Basman

In Cambridge, 2006

Full name Michael John Basman

Country United Kingdom

Born March 16, 1946 (1946-03-16)  
(age 62)

London, England

Title International Master

FIDE rating 2338 (01.10.2008)

Peak rating 2410 (01.07.1971)

Born March 16, 1946 in St. Pancras, London) is an English chess player, chess author and, International Master.

He was awarded the International Master title in 1980.

He is a prolific writer, who has made many contributions to the field of chess openings, and is particularly known for frequently choosing

Michael J Basman (2350) -

Alexandar Budnikov (2535)

[A00]

Lloyds Bank open 17th London, 1993

1.h3 d5 2.a3 e5 3.c4 d4 4.d3 a5  
5.g4 ♖c6 6.♗f3 h6 7.♗bd2 ♗f6  
8.♙g2 ♙e7 9.g5 hxg5 10.♗xg5  
♗h5 11.♗df3 f6 12.♗e4 g5 13.♚c2  
♞g8 14.e3 dxe3 15.♙xe3 ♗g7  
16.d4 exd4 17.0-0-0 ♗f5 18.♗g3  
♚d7 19.♞he1 ♗xe3 20.fxe3 d3  
21.♞xd3 ♚e6 22.♞d5 ♙d7 23.♗f5  
0-0-0 24.♚b3 ♚e4 25.♗e5 ♚xf5  
26.♗xc6 ♙xc6 27.♞xf5 ♙xg2 28.e4  
g4 29.hxg4 ♞xg4 30.♞xa5 b6 31.c5  
♙b7 32.c6+ ♙b8 33.♞a8+ 1-0

bizarre or rarely played openings in his own games, including:

The St. George Defence (with which English Grandmaster Tony Miles once famously defeated the then World Champion Anatoly Karpov);

The Grob (for Black and White) and also;

The Creepy Crawly, which is a3, then h3 followed by a quick c4.

Possibly his greatest tournament success was tying for first place in the British Chess Championship tournament of 1973, although he was to lose the play-off match with William Hartston.

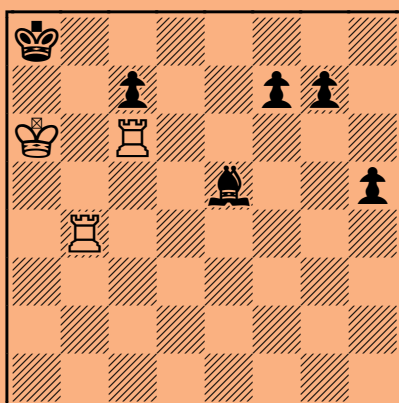
In 1975 England contested a match over ten boards against France in Luton. Basman played Board One, ahead of future super Grandmasters Nunn and Speelman. He created the UK Chess Challenge, a tournament for juniors of all standards and ages progressing over 4 stages.



Basman's father was an Armenian immigrant who changed the family name from Basmadjian. His family knew the singer Cleo Laine, who worked as a baby-sitter for the young Michael.

**The Solution to  
DECEMBER'S PRIZE PUZZLE**

S. Brehmer 1950



White mates in 4 moves at the latest, against any defence.

**1.Rc3!!**

A quite remarkable idea, planning the simple 2.Rcb3 and then Rb8 or Rb7-a7 mate. Black has to take.

There are an amazing number of alternative tries, all of which fail:

1.Rb5 Bf4 2.Rxh5 (2.Rd5 Bg5) 2... Bh6 3.Rd5 Bg5.

1.Ka5 Bd4 2.Rxd4 Kb7;

1.Rb1 Bg3! 2.Rd1 Bh4;

1.Rc1 g6 2.Rcb1 c6 3.Rb7 Bb2!!;

1.Rb3 g6 2.Re3 f6 3.Re6 c5;

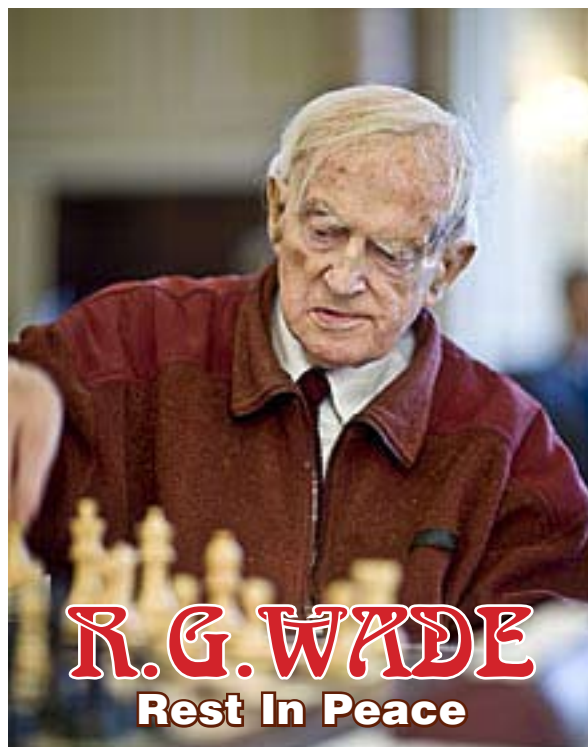
1.Re4 Kb8 2.Rxe5 Kc8;

1.Rb7 Bd6 2.Rc1 c6 3.Rcb1 Bb4.

**1...Bxc3 2.Re4 Be5 3.Rxe5**

With mate next move.

**1-0**



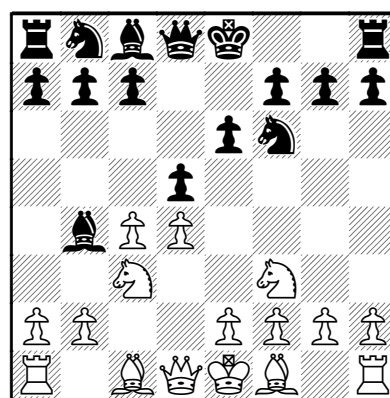
**Leif Ogaard (2340) - Robert Graham Wade**

[E56]

Skopje ol (Men) finals-B Skopje, 1972

Here is a game which demonstrates Bob's fluent, tactical style.

**1.d4 ♖f6 2.c4 e6 3.♘f3 d5 4.♘c3 ♙b4**



**5.e3**

5.cxd5 exd5 6.♙g5 (6.♚a4+ ♘c6 7.♙g5 h6 8.♙xf6 ♚xf6 9.e3 0-0 10.♙e2 a6 11.0-0 ♙e6 12.♚fc1 ♙d6 13.♚d1) 6... h6 7.♙h4!? g5 8.♙g3 ♘e4 9.♘d2 ♘xc3

10.bxc3 ♖xc3 11.♖c1 ♕a5♞; 5.♗a4+ ♘c6  
6.♞e5 ♕d7; 5.a3!? ♕xc3+ 6.bxc3 dxc4♞  
5...c5 6.♕d3 0-0 7.0-0 dxc4

7...♞c6 8.a3 ♕a5 9.cxd5 exd5 10.dxc5  
♕xc3 11.bxc3 ♕g4 12.c4 ♞e5 13.cxd5!  
♕xf3 14.gxf3 ♗xd5 15.♕e2 ♗xc5  
16.♕b2±

8.♕xc4 ♞c6 9.a3 ♕a5

9...♕xc3 10.bxc3±

10.♗d3

10.♞e2 ♕b6! 11.dxc5 ♗xd1 12.♖xd1  
♕xc5 13.b4 ♕e7 14.♕b2 ♕d7!; 10.♕d3  
cxd4 11.exd4 ♕b6 12.♕e3 ♗d6.

10...a6 11.♖d1

11.dxc5 ♗xd3 12.♕xd3 ♕xc3 13.bxc3  
♞a5 14.♖b1 ♖d8! 15.♕c2 ♕d7 16.♞e5  
♖ac8; 11.♞e4 b5 12.♕a2 c4 13.♗c2  
♞xe4 14.♗xe4 ♕b7; 11.a4 ♕d7 12.dxc5  
♗e7 13.e4 ♗xc5 14.♕e3 ♗h5.

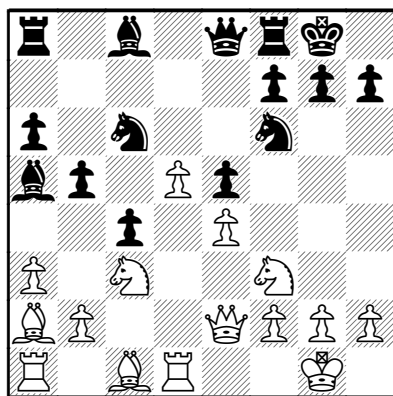
11...b5 12.♕a2 c4

12...♕b7 13.dxc5 ♕xc3 14.♗c2 ♗e7  
15.♗xc3 ♖ad8 16.♕d2 ♞e4 17.♗c2  
♞xc5.

13.♗e2 ♗e8 14.e4?!

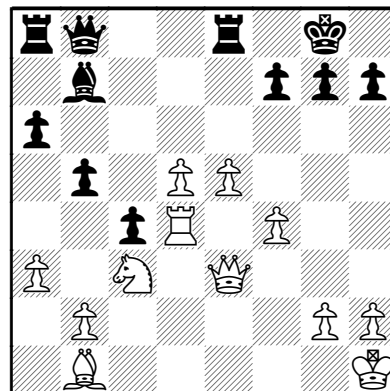
14.♕d2! ♕b6 (14...e5 15.d5 ♞d8  
16.♞e4±) 15.b3 cxb3 16.♕xb3 ♕b7  
17.♕e1 e5 18.d5 ♞a5 19.♕c2 ♞c4  
20.a4±

14...e5! 15.d5



15...♞d4! 16.♞xd4 exd4 17.♖xd4

♗e5 18.♕e3 ♞g4♞ 19.f4 ♗b8  
20.♖ad1 ♕b6 21.♕b1 ♖e8 22.e5  
♞xe3 23.♗xe3 ♕b7♞ 24.♞h1 ♕xd4  
25.♖xd4

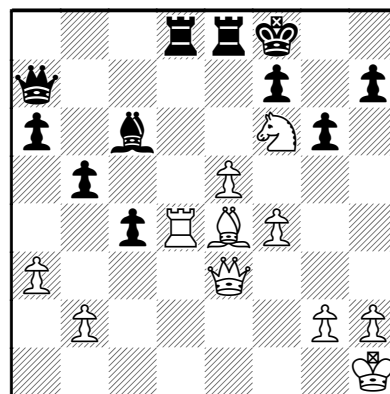


25...♗a7! 26.♗e4?

26.♗d2 ♖ad8 27.♞e4.

26...g6 27.♗e3 ♖ad8! 28.♞e4 ♕xd5  
29.♞f6+ ♞f8 30.♕e4

30.♞xe8 ♗xd4 31.♗xd4 ♕xg2+  
32.♞xg2 ♖xd4-+; 30.♞xh7+ ♞g7-+  
30...♕c6!

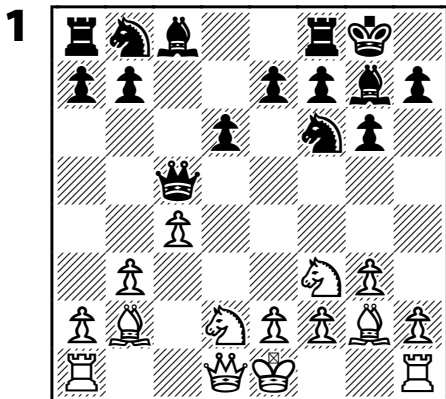


30...♕xe4? 31.♖xd8 ♗xe3 (31...♖xd8  
32.♗xa7 ♖d1+ 33.♗g1+-) 32.♖xe8+ ♞g7  
33.♖g8+ ♞h6 34.♞g4+-  
31.f5 ♗xd4 32.♗h6+ ♞e7 0-1.

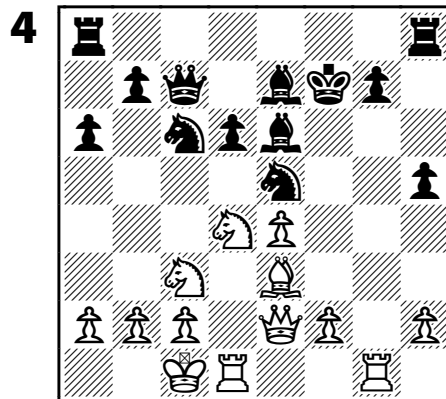
Bob Wade was a stalwart of British chess for years though he originally lived in New Zealand. More next issue on his passing.

# CHESS QUIZ PAGE

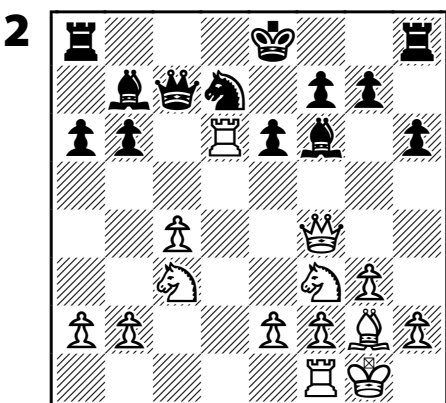
*Find the best win!*



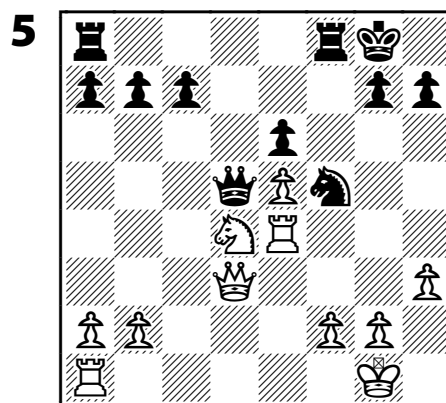
Black to move and win.



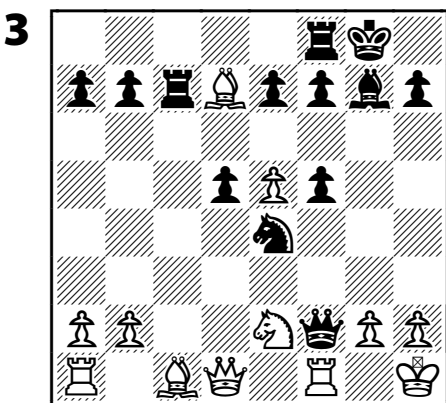
White to move and win.



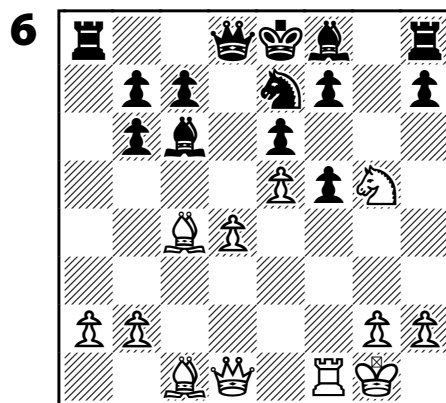
White to move and win.



Black to move and win.



Black to move and win.

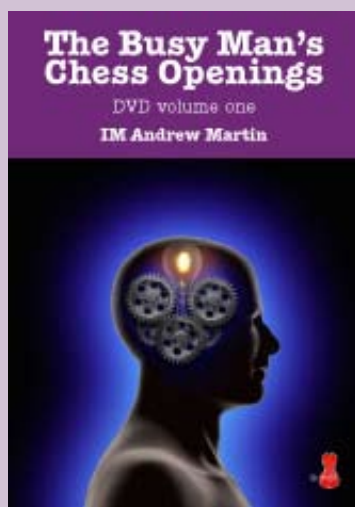


White to move and win.

Answers are on the last page

**DO YOU ALWAYS  
FEEL BUSY? TOO  
BUSY TO IMPROVE AT  
CHESS?**

IM Andrew Martin and publisher Bob Long have designed a DVD study system of only **THREE** Openings to get you onto the **Fast Track** of Chess Improvement.



7½ hours of dual layer DVDs (NTSC format, not PAL):

- 1... b6 against most openings.
- 1... e6 special French Variation of the Rubinstein to handle 1.e4.
- Playing the Colle-Zukertort with the white pieces.

**Thinkers' Press, inc.**  
1524 LeClaire St.  
Davenport, IA 52803 USA

\$61.95 including shipping by air in a (3) disc plastic holder.

**Satisfaction absolutely guaranteed or your payment back.**

**We also take PayPal (Robert Long, bob@thinkerspressinc.com)**

**Best Answers to  
Quizzes on page 11**

1. 1...Ng4 2. Ne4 Qa5+
2. 1. Rxe6+
3. 1...Rxd7
4. 1. Rxg7+ Ke8 2.Nxe6 Qa5  
3.f4 Nd7 4.Rd5!
5. 1...c5
6. 1.Nxf7 Kxf7 2.Qh5+ Ng6  
3.Qxf5+

If you believe you have some interesting games to be put in the pages of THE RIGHT MOVE, be sure to submit them to the editor—

Andrew Martin:

a.martin2007@yahoo.co.uk

**English Chess  
Federation (ECF)  
Junior Chess Magazine**

*The Right Move*

Editor:

Andrew Martin

a.martin2007@yahoo.co.uk

ECF Director:

of Junior Chess & Education:

Peter Purland.

director.juniorchess@englishchess.org.uk

Proofers:

Bob Long, Andrew Martin.

Design/Layout: Bob Long.